

联轴器 Coupling

HONY DRIVE HARMONIOUS TRANSMISSION
宏昱传动 和谐传递





杭州宏昱传动设备有限公司总部位于杭州，是一家集研发、生产、销售于一体的专业减速机制造企业，公司自行生产的HYR、HYK、HYS、HYF系列齿轮减速机，RV系列蜗轮蜗杆减速机，WP系列蜗轮蜗杆减速机，SWL蜗轮丝杆升降机，产品在同行中处于领先地位。

为了能给客户提供更全方位的服务，满足客户对其他配件的需求，我们同时也提供链轮，链条，皮带轮，锥套，联轴器等传动配件。

感谢过去20年的机械生产经验积累，让宏昱传动有能力提供各项非标定制服务，以及成本最优的传动解决方案。我们的技术以及服务团队竭诚为您服务。

目前，宏昱传动销售网络已遍布100多个国家及地区，广泛服务于钢铁行业，冶金行业，印刷机械，食品机械，包装机械，化工机械，起重设备，船舶设备，清洁行业等各种领域。

我们的宗旨是：以市场为导向，客户需求为中心，提供最优质的服务！我们坚信我们的口号“you name it, we make it!”

“宏昱”品牌系列产品各项品质将日趋完美。让我们携手共创辉煌的明天！

Hangzhou Hony transmission Co., Ltd. is located in Hangzhou CHINA. Hony transmission is a professional manufacturing enterprise that specializes in the research, production and marketing of speed reducer. Our products HYR、HYK、HYS、HYF series of helical gear speed reducers, RV series of worm speed reducers, WP series of worm gear speed reducers, SWL series SWL-WORM GEAR SCREW JACK are leading in the power gearbox manufacturing industries.

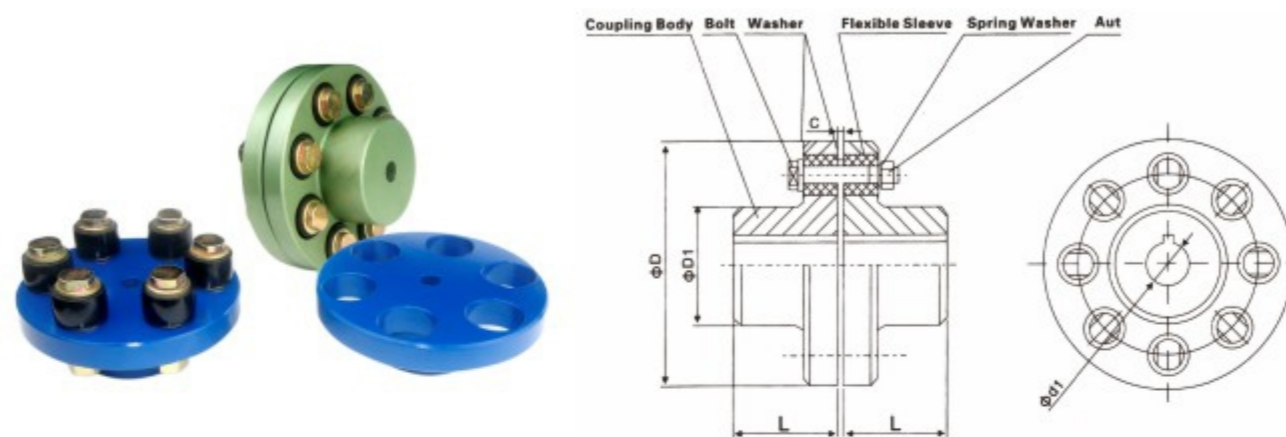
To supply our clients with a full service, we have integrated the offer with other products such as Sprocket, Chain, Coupling, Bushing, Pulley, Gear & Rack, etc.

With over 20 years experience in mechanical line, Hony transmission is able to offer custom, cost-optimized solutions in accordance with customer drawings. Our internal Application Technology and service department are happy to provide free advice on custom solutions.

Hony transmission's sales network covers 120 countries and zone, services to the steel industries, metallurgical industries, petroleum machinery, food machinery, chemical machinery, lifting equipment, lifting equipment, cleaning industry and so on.

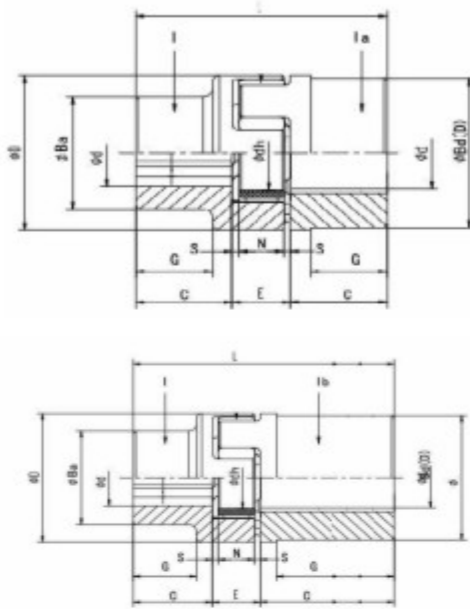
Our goal is market oriented and customers focus to serve a better service. "you name it, we make it!" is our slogan.

Let us hand in hand to create a brilliant tomorrow!



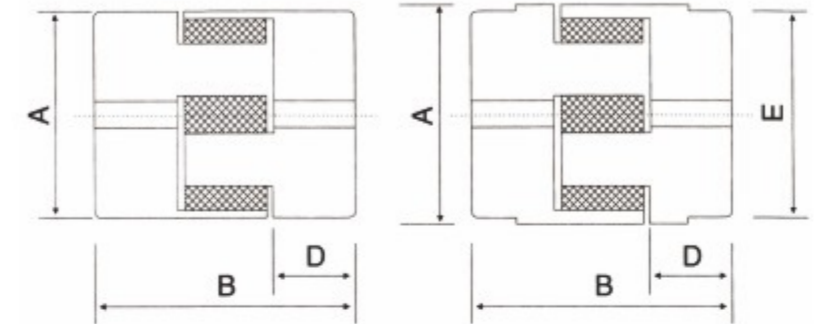
FCL COUPLING

Size	D	D1	d1	L	C	N-M	PIN NO.	Max Torque n.m	Max Speed r/min	Weight kg
FCL90	90	35.5	11	28	3	4-M8*50	1	6	4000	1.7
FCL100	100	40	11	35.5	3	4-M10*56	2	12	4000	2.5
FCL112	112	45	13	40	3	4-M10*56	2	18	4000	3
FCL125	125	56/50	13	45	3	4-M12*64	3	27	4000	4
FCL140	140	71/63	13	50	3	6-M12*64	3	55	4000	5.6
FCL160	160	80	15	56	3	8-M12*64	3	118	4000	7.8
FCL180	180	90	15	63	3	8-M12*64	3	160	3500	10.5
FCL200	200	100	21	71	4	8-M20*85	4	250	3200	16.2
FCL224	224	112	21	80	4	8-M20*85	4	400	2850	21.6
FCL250	250	125	25	90	4	8-M24*100	5	616	2550	31.8
FCL280	280	140	34	100	4	8-M24*116	6	980	2300	44
FCL315	315	160	41	112	4	10-M24*116	6	1568	2050	58
FCL355	355	180	60	125	5	8-M30*150	8	2460	1800	89.5
FCL400	400	200	60	125	5	10-M30*150	8	3920	1600	113
FCL450	450	224	65	140	5	12-M30*150	8	6180	1400	145
FCL560	560	250	85	160	5	14-M30*150	8	9800	1150	229
FCL630	630	280	95	180	5	16-M30*150	8	15680	1000	296



GE COUPLING

Size	COM.	Spider Rated Torque(nm)			Std Bore (D)	Finish Bore (d)min-max	L	C	E	N	S	D	dh	ba/bd	G
		92 SH A	98 SH A	64 SH D											
14					14-16	35	11	13	10	1.5	30	10			
19	1	10	17	21	6	6-16	66	25	16	12	2	40	18	32	20
	1a				6	6-24								40	-
	1b				6	6-24								96	40
24	1	35	60	75	9	9-24	78	30	14	2	55	27	40	24	-
	1a				9	9-32								55	-
	1b				9	9-32								118	50
28	1	95	160	200	10	10-28	90	35	20	15	2.5	65	30	48	28
	1a				10	10-38								65	-
	1b				10	10-38								140	60
38	1	190	325	405	12	12-38	114	45	24	18	3	80	38	66	37
	1a				12	12-45								78	-
	1b				12	12-45								164	70
42	1	265	450	560	12	12-42	126	50	26	20	3	95	46	75	40
	1a				12	12-55								94	-
	1b				12	12-55								176	75
48	1	310	525	655	12	12-48	140	56	28	21	3.5	105	51	85	45
	1a				12	12-60								104	-
	1b				12	12-60								190	81
55	1	410	685	825	15	15-55	160	65	30	22	4	120	60	98	52
	1a				15	15-70								118	-
	1b				15	15-70								210	90
65	1	625	940	1175	15	15-65	185	75	35	26	4.5	135	68	115	61
	1a				15	15-75								133	-
	1b				15	15-75								235	100
75	1	1280	1920	2400	15	15-75	210	85	40	30	5	160	80	135	69
	1a				15	15-90								158	-
	1b				15	15-90								260	110
90	1	2400	3600	4500	38	38-90	245	100	45	34	5.5	200	100	160	81
	1a				38	38-100								198	-
	1b				38	38-100								295	125



Type 1

Type 2

JAW COUPLINGS

Size	Type	A	B	D	E	Std Bore	Bore Metric		Bore Inch	
							Min	Max	Min	Max
L035	1	16	20.5	6.6	-	3	3	8	1/8"	3/8"
L050	1	28	43.2	15.6	-	6	6	15	3/16"	5/8"
L070	1	35	50.8	19.0	-	9	9	19	3/16"	3/4"
L075	1	45	54.7	21	-	9	9	25	3/16"	1"
L090	1	54	54.7	21	-	9	9	28	3/16"	1 1/8"
L095	1	54	63.7	25.5	-	9	9	28	3/8"	1 1/8"
L099	1	64.5	72.5	27	-	12	12	35	7/16"	1 3/8"
L100	1	64.5	88.5	35	-	12	12	35	7/16"	1 3/8"
L110	1	85	108	43	-	15	15	48	1/2"	1 7/8"
L150	1	96	115.4	45	-	15	15	48	5/8"	1 7/8"
L190	2	115	133.4	54	101.6	19	19	55	5/8"	2 1/4"
L225	2	127	153.4	64	108	19	19	65	3/4"	2 5/8"



Material: NBR
Temperature °C: -40°C~100°C



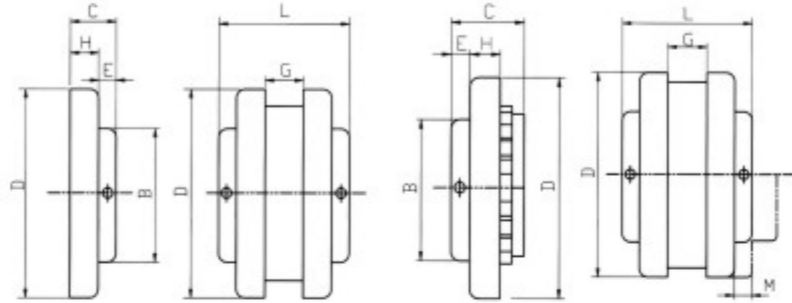
Material: Urethane
Temperature °C: -35~70°C



Material: Hytrel
Temperature °C: -50°C~120°C



Material: Bronze
Temperature °C: -40°C~232°C

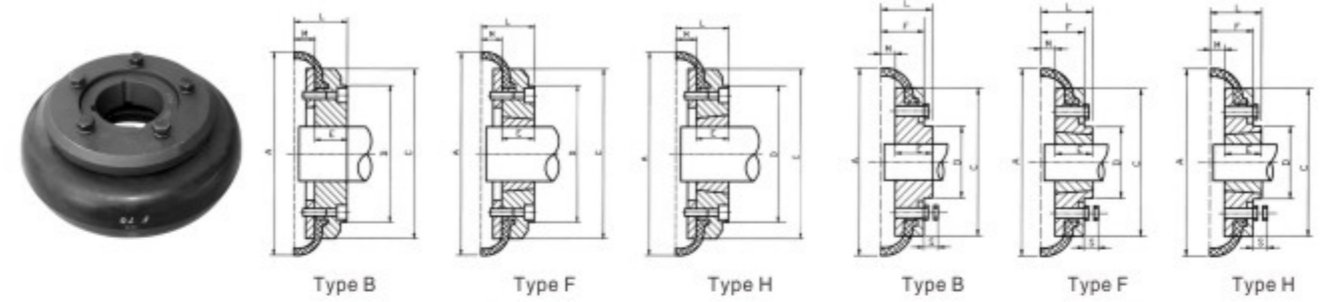


Type J

Type S

J-FLEX COUPLINGS

Size	Type	D	Bore(mm)		C	E	G	B	L	H	M
			Stock	Max							
3J	J	52.4	9	22.2	20.6	11.1	9.5	38.1	50.8	9.5	14.3
4J	J	62.5	12	25.4	22.2	11.1	15.9	41.3	60.3	11.1	19.1
5J	J	82.6	12	28.6	27.0	11.9	19.1	47.6	73.0	15.1	24.6
5S	S	82.6	12	31.8	34.1	11.5	19.1	47.6	72.2	15.1	24.6
6J-1	J	101.6	15	31.8	31.0	15.1	22.2	49.2	84.2	15.9	27.8
6J-2	J	101.6	15	34.9	31.0	15.1	22.2	63.5	84.2	15.9	27.8
6J-3	J	101.6	15	44.5	33.3	13.5	22.2	63.5	88.9	19.8	27.8
6J-4	J	101.6	15	47.6	39.7	19.8	22.2	71.4	101.6	19.8	27.8
6S	S	101.6	15	38.1	41.3	14.3	22.2	63.5	90.5	19.8	27.8
7S	S	117.5	16	47.6	46.8	17.5	25.4	71.4	100.0	19.8	33.3
8J	J	138.4	18	60.3	49.2	26.2	28.6	82.6	127.0	23.0	38.1
8S	S	138.4	18	57.2	53.2	19.1	28.6	82.6	112.7	23.0	38.1
9J	J	161.3	22	73.0	57.9	31.8	36.5	104.8	152.4	26.2	44.5
9S	S	161.3	22	63.5	61.1	19.8	36.5	92.1	128.6	26.2	44.5
10J	J	190.5	28	85.7	68.3	37.3	41.3	120.7	177.8	30.9	50.8
10S	S	190.5	28	79.4	67.5	20.6	41.3	111.1	144.4	30.9	50.8
11J	J	219.1	30	98.4	77.8	39.7	47.8	142.9	203.3	38.1	60.5
11S-1	S	219.1	30	57.2	87.3	28.6	47.8	95.3	181.1	38.1	60.5
11S-2	S	219.1	30	73.0	87.3	28.6	47.8	123.8	181.1	38.1	60.5
11S-3	S	219.1	30	92.1	87.3	28.6	47.8	133.4	181.1	38.1	60.5
12S-1	S	254.0	38	57.2	101.6	32.5	58.7	95.3	209.5	42.9	68.3
12S-2	S	254.0	38	73.0	101.6	32.5	58.7	123.8	209.5	42.9	68.3
12S-3	S	254.0	38	100.0	101.6	32.5	58.7	146.1	209.5	42.9	68.3
13S-1	S	298.5	50	73.0	111.1	33.3	68.3	123.8	235.0	50.0	77.7
13S-2	S	298.5	50	114.3	111.1	33.3	68.3	171.5	235.0	50.0	77.7
14S-1	S	352.4	50	73.0	114.3	27.0	82.6	123.8	250.9	57.2	88.9
14S-2	S	352.4	50	127.0	114.3	27.0	82.6	190.5	250.9	57.2	88.9

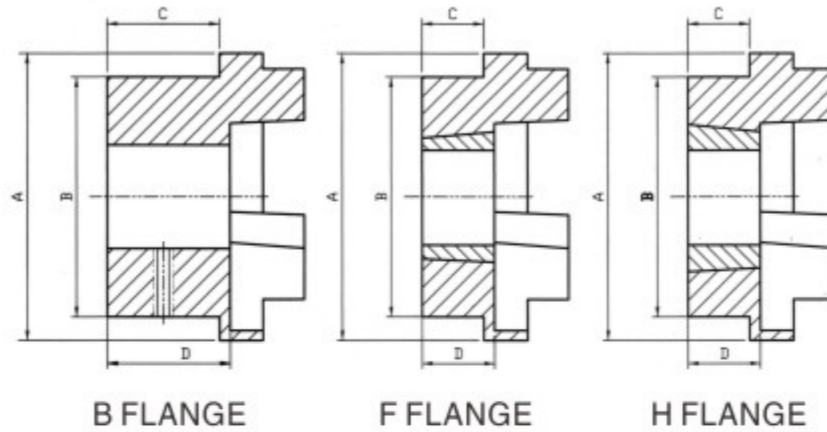


SIZE F40--F60

SIZE F70--F250

F-FLEXIBLE COUPLINGS

Size	Type	Bush No	Max Bore				L	E	A	C	D	F	S	M	
			Casting		Steel									Casting	Steel
			mm	inch	mm	inch									
F40	B	—	30	1 1/8"	30	1 1/8"	33	22	104	82	—	—	—	11	11
	F	1008	25	1"	25	1"									
	H	1008	25	1"	25	1"									
F50	B	—	38	1 1/2"	38	1 1/2"	45	32	133	100	79	—	—	12.5	12.5
	F	1210	32	1 1/4"	32	1 1/4"									
	H	1210	32	1 1/4"	32	1 1/4"									
F60	B	—	42	1 5/8"	45	1 3/4"	55	38	165	125	70	—	—	16.5	16.5
	F	1610	42	1 5/8"	42	1 5/8"									
	H	1610	42	1 5/8"	42	1 5/8"									
F70	B	—	48	1 7/8"	50	2"	47	35	187	142	80	50	13	10.5	11.5
	F	2012	50	2"	50	2"									
	H	1610	42	1 5/8"	42	1 5/8"									
F80	B	—	55	2 1/4"	60	2 3/8"	55	42	211	165	98	54	16	12.5	12.5
	F	2517	60	2 1/2"	60	2 1/2"									
	H	2012	50	2"	50	2"									
F90	B	—	65	2 1/2"	75	3"	63.5	49	235	188	108	60	16	13.5	13.5
	F	2517	60	2 1/2"	60	2 1/2"									
	H	2517	60	2 1/2"	60	2 1/2"									
F100	B	—	80	3 1/8"	80	3 1/8"	70.5	56	254	216	120	62	16	13.5	13.5
	F	3020	75	3"	75	3"									
	H	2517	60	2 1/2"	60	2 1/2"									
F110	B	—	90	3 1/2"	90	3 1/2"	75.5	63	279	233	128	62	16	12.5	12.5
	F	3020	75	3"	75	3"									
	H	3020	75	3"	75	3"									
F120	B	—	95	3 3/4"	100	4"	84.5	70	314	264	140	67	16	13.5	14.5
	F	3525	100	4"	100	4"									
	H	3020	75	3"	75	3"									
F140	B	—	120	4 3/4"	125	5"	110.5	94	359	311	178	73	17	11	16
	F	3525	100	4"	100	4"									
	H	3525	100	4"	100	4"									
F160	B	—	130	5 1/8"	140	5 1/2"	117	120	402	345	187	78	19	12	15
	F	4030	115	4 1/2"	115	4 1/2"									
	H	4030	115	4 1/2"	115	4 1/2"									
F180	B	—	140	5 1/2"	150	6"	137	114	470	394	205	94	19	15	23
	F	4535	125	5"	125	5"									
	H	4535	125	5"	125	5"									
F200	B	—	140	5 1/2"	150	6"	138	114	508	429	205	103	19	16	24
	F	4535	125	5"	125	5"									
	H	4535	125	5"	125	5"									
F220	B	—	150	6"	160	6 1/4"	154.5	127	562	474	223	118	20	20	27.5
	F	5040	125	5"	125	5"									
	H	5040	125	5"	125	5"									
F250	B	—	180	7"	190	7 1/2"	161.5	132	628	532	254	125	20	20	29.5



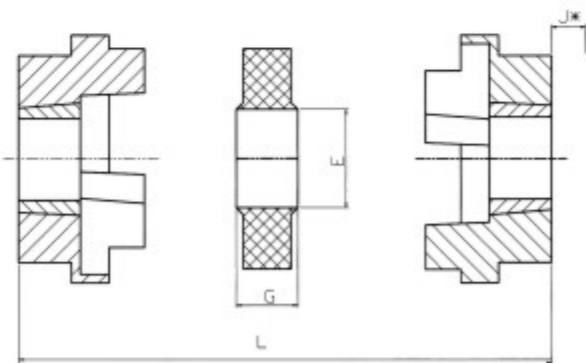
B FLANGE

F FLANGE

H FLANGE

HRC COUPLINGS

Size	Bush	Type F&H/		C	D	Bored to Size		A	B	E	F	G	L1	L2	L3	J*		
		Bore				Bore												
		MAX	MIN			MAX	MIN											
70	1008	25	9	20.0	23.5	32	10	20	23.5	69	60	31	16.7	18	65	65	65	29
90	1108	28	9	19.5	23.5	42	10	26	30.0	85	70	32	21.7	22.5	69.5	76	82.5	29
110	1610	42	14	18.5	26.5	55	10	37	45.5	112	100	45	27.7	29	82	101	119	38
130	1610	42	14	18.0	26.5	60	20	39	47.5	130	105	50	34.5	36	89	110	131	38
150	2012	50	14	23.5	33.5	65	28	46	56.0	150	115	62	39.0	40	107	129.5	152	42
180	2517	60	16	34.5	46.5	80	28	58	70.0	180	125	77	46.5	49	142	166	189	48
230	3020	75	25	39.5	52.5	100	48	77	90.0	225	155	99	55.5	59.5	165	202	240	55
280	3525	100	35	51.0	66.5	115	60	90	105.5	275	206	119	72.0	74.5	208	247	286	67
280	3535	100	35	76.0	91.5	115	60	90	105.5	275	206	119	72.0	74.5	258	272	286	92



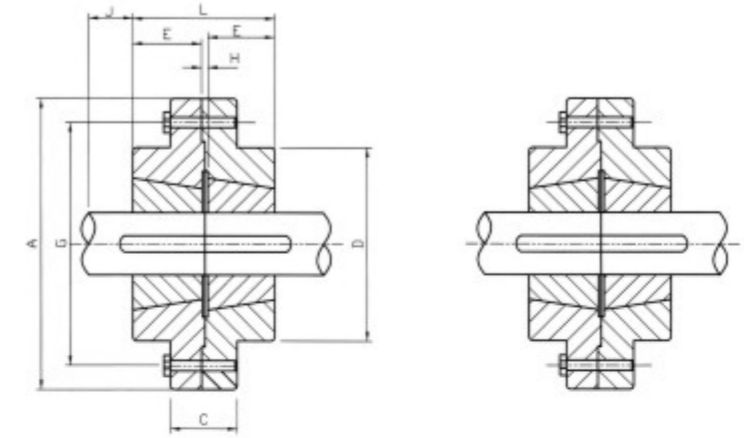
Assembled length

L1 is the length with assembly combinations F.F-H.H-F.H

L2 is the length with assembly combinations F.B-H.B

L3 is the length with assembly combinations B.B

J* is the wrench clearance required for tightening and loosening the bush on the shaft. The use of a shortened key will allow this dimension to be reduced

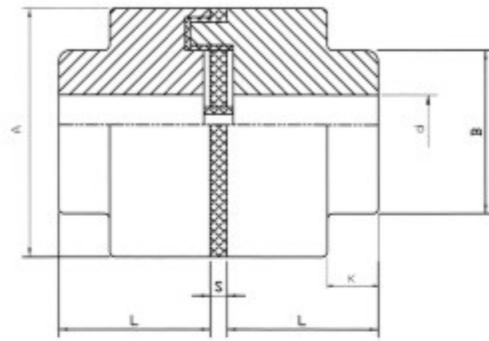


Coupling Assembly HF

Coupling Assembly FF

RIGID COUPLINGS

Size	Bush NO.	Max. Bore		A	C	D	E	G	H	J	L
		Metric	Inch								
RM12	1210	32	1 1/4"	118	35	83	25.5	102	7	38	58
RM16	1615	42	1 5/8"	127	43	80	38	105	7	38	83
RM25	2517	60	2 1/2"	178	51	123	45	149	7	48	97
RM30	3030	75	3"	216	65	146	76	181	7	54	159
RM35	3535	100	3 1/2"	248	75	178	89	213	7	67	185
RM40	4040	110	4"	298	76	210	102	257	7	79	211
RM45	4545	125	4 1/2"	330	86	230	114	286	7	89	235
RM50	5050	125	5"	362	92	266	127	314	7	92	261

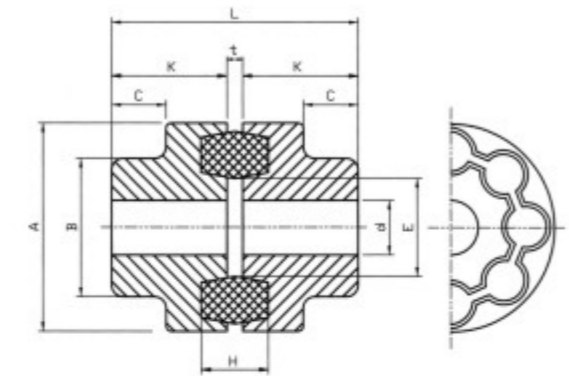


NM COUPLINGS

Size	Bore Diameter		A	B	L	K	S
	Min.	Max.					
NM-50	7	19	50	33	25	12.5	2.0 ± 0.5
NM-67	8	28	67	46	30	15.0	2.5 ± 0.5
NM-82	10	32	82	53	40	16.0	3.0 ± 1.0
NM-97	12	42	97	69	50	20.0	3.0 ± 1.0
NM-112	14	48	112	80	60	35.0	3.5 ± 1.0
NM-128	18	55	128	90	70	41.0	3.5 ± 1.0
NM-148	22	65	148	107	80	48.0	3.5 ± 1.0
NM-168	28	75	168	125	90	54.0	3.5 ± 1.5

Size	Torque		Max Speed
	Nomal(N.M)	Max(N.M)	rpm
NM-50	12.74	22.54	13500
NM-67	21.56	39.20	10000
NM-82	49.00	88.20	8000
NM-97	102.90	186.20	7000
NM-112	163.66	294.00	6000
NM-128	261.66	470.40	5000
NM-148	408.66	735.00	4500
NM-168	681.10	1225.00	4000

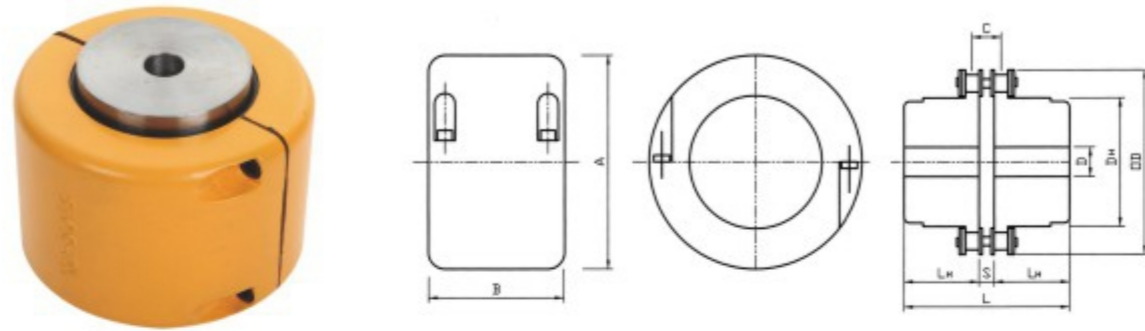
$$\text{Required Torque(Nm)} = \frac{\text{Design Power(Km)} \times 9555}{\text{rev/min}}$$



MH COUPLINGS

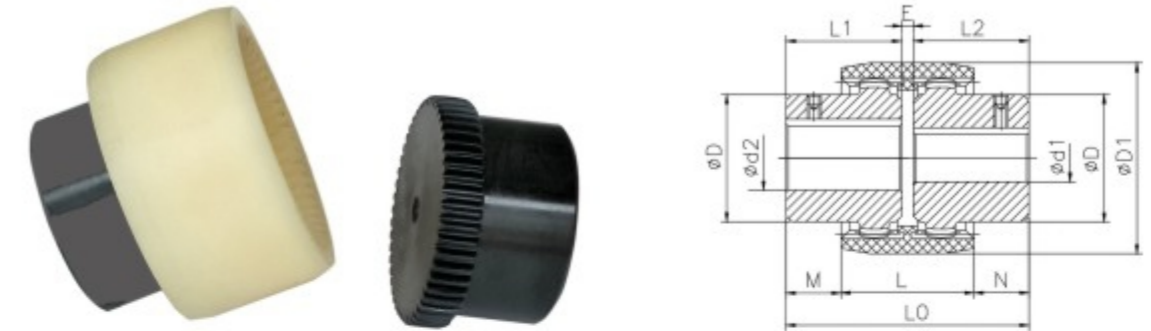
Size	A	B	d		L	K	H	t	C	E
			Max	Min						
MH-45	45	27	14	5	49	23	15	3	13	20
MH-55	55	38	20	9	57	27	17	3	15	26
MH-65	65	45	25	12	63	30	19	3	16	33
MH-80	80	52	30	16	73	35	23	3	18	41
MH-90	90	62	35	20	83	40	25	3	21	46
MH-115	115	80	45	25	113	55	33	3	29	58
MH-130	130	90	50	27	123	60	37	3	32	65
MH-145	145	100	55	30	133	65	39	3	35	72
MH-175	175	115	65	35	163	80	47	3	43	84
MH-200	200	130	80	50	223	110	53	3	70	92

Size	MH45	MH55	MH65	MH80	MH90	MH115	MH130	MH145	MH175	MH200
Nomina Torque(Nm)	1.96	3.92	6.86	15.68	36.26	78.40	117.60	196.00	421.40	637.00
MAX Speed(rpm)	6000	6000	6000	5500	5000	4600	4400	4200	3800	3600



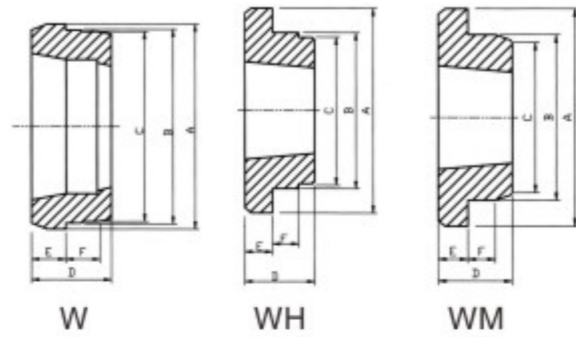
CHAIN COUPLINGS

Size	Chainpitch	Coupling									Casing/COVER			
		Drill hole	D		OD	L	DH	LH	S	C	Approx. Weight (kg/m)	A	B	Approx. Weight (kg/m)
			Min	Max										
3012	9.525	12	13.5	16	45	65	27.2	29.5	6	10.1	0.31	69	63	0.22
4012	12.7	12	14	22	62	79.4	36	36	7.4	14.4	0.73	77	72	0.30
4014		12	14	28	69	79.4	45	36			1.12	84	75	0.31
4016		13.5	16	32	77	87.4	51.5	40			1.50	92	72	0.35
5014	15.875	14.5	17	35	86	99.7	56	45	9.7	18.1	2.15	101	85	0.47
5016		14.5	18	40	96	99.7	64	45			2.75	110	87	0.50
5018		16	18	45	106	99.7	73.5	45			3.60	122	85	0.60
6018	19.05	20	22	56	127	123.5	89.5	56	11.5	22.8	6.55	147	105	1.2
6020		20	24	60	139	123.5	102.5	56			8.38	158	105	1.2
6022		20	28	71	151	123.5	115	56			10.4	168	117	1.2
8018	20.4	20	32	80	169	141.2	115	63	15.2	29.3	13.2	190	129	1.9
8020		20	36	90	185	145.2	125	65			16.2	210	137	2.5
8022		20	40	100	202	157.2	142	71			21.8	226	137	2.7
10020	31.75	25	45	110	233	178.8	162	80	18.8	35.8	32.4	281	153	4.1
12018	38.1	35	50	125	256	202.7	173	90	22.7	45.4	43.2	307	181	5.2
12022		35	56	140	304	222.7	213	100			69.1	357	181	6.7



GEAR COUPLINGS

Size	LENGTHA	SLEEVE		HUB		SHAFT GAP F	BORE		WEIGHT	
		DIA B	LENGTH C	DIA B	LENGTH C		D1	D2	HUB KG	SLEEVE KG
GF14	45	40	37	25	20	5	5	14	0.08	0.025
GF19	47	48	37	32	21	5	10	19	0.01	0.035
GF24	50	52	40	36	21	8	10	24	0.15	0.035
GF28	78	66	46	44	35	8	6	28	0.38	0.07
GF32	78	76	48	50	35	8	12	32	0.5	0.09
GF38	78	83	48	58	35	8	12	38	0.65	0.105
GF42	84	92	50	68	38	8	12	42	0.93	0.13
GF48	96	98	50	68	45	6	12	48	1.11	0.16
GF55	120	125	65	83	59	10	25	55	1.86	0.36
GF65	144	140	72	96	70	13	30	65	3.17	0.57



WH Weld-On Hubs

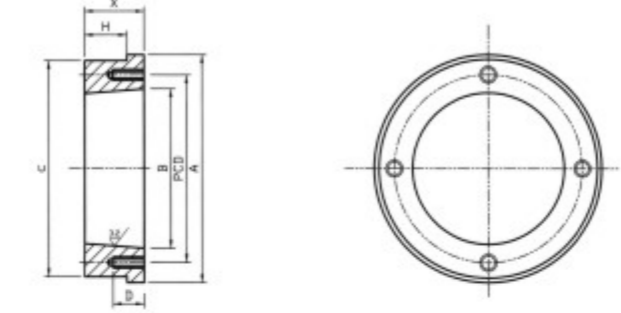
Size	Bushing	A	B	C	D	E	F
WH12	1210	70	65	64.5	25	9	10
WH16-1	1610	80	75	74.5	25	9	10
WH20	2012	95	90	89.5	32	12	12
WH25	2517	115	110	109.5	44	19	15
WH30	3020	145	140	139.5	50	20	15
WH35	3525	190	180	179.5	65	25	25
WH40-1	4030	200	190	189.5	76	32	30
WH40-2	4040	200	190	189.5	101	32	30
WH45-1	4535	210	200	199.5	89	40	30
WH45-2	4545	210	200	199.5	114	40	30
WH50-1	5040	230	220	219.5	102	40	35
WH50-2	5050	230	220	219.5	127	40	35

W Weld-On Hubs

Size	Bushing	A	B	C	D	E	F
W12	1215	70.03	63.50	62.17	38.10	15.88	9.53
W16	1615	82.55	73.03	72.24	38.10	15.88	9.53
W20	2017	101.60	88.90	88.11	44.45	19.05	14.45
W25	2517	127.00	111.13	110.34	44.45	19.05	12.70
W30	3030	149.86	133.35	132.56	76.20	25.40	19.05
W35	3535	184.15	158.75	157.96	88.90	31.75	25.40
W40	4040	225.43	196.85	196.06	101.60	31.75	31.75
W45	4545	254.00	222.25	221.46	114.30	38.10	38.10

WM Weld-On Hubs

Size	Bushing	A	B	C	D	E	F
WM12	1210	70.00	60.00	58.00	25.00	9.00	10.00
WM16-1	1610	83.00	70.00	68.00	25.00	9.00	10.00
WM16-2	1615	83.00	70.00	68.00	38.00	16.00	11.00
WM20	2012	95.00	90.00	88.00	32.00	12.00	12.00
WM25	2517	127.00	110.00	108.00	44.00	19.00	13.00
WM30-1	3020	152.00	130.00	125.00	50.00	20.00	15.00
WM30-2	3030	152.00	130.00	125.00	76.00	25.00	19.00
WM35	3535	184.00	155.00	151.00	89.00	32.00	25.00
WM40	4040	225.00	195.00	187.00	102.00	32.00	32.00
WM45	4545	254.00	220.00	213.00	114.00	38.00	38.00
WM50	5050	276.00	242.00	228.00	127.00	38.00	38.00



XT HUBS

Part No.	For Bushing	Dimensions							Tapped	
		A	H	B	C	PCD	X	D	No.	Size
XTH15	XTH15	82.55	11.11	50.65	73.02	61.91	15.88	15.88	4	1/4-20NC
XTH20	XTH20	104.78	14.29	68.00	96.83	80.96	20.64	20.64	4	5/16-18NC
XTH25	XTH25	120.65	20.64	80.81	111.12	95.25	28.58	28.58	4	3/8-16NS
XTH30	XTH30	152.40	22.23	98.28	146.05	115.89	31.75	31.75	4	7/16-14NC
XTH35	XTH35	168.28	26.99	118.91	161.16	138.11	38.10	38.1	4	1/2-13NC
XTH40	XTH40	193.68	31.75	134.79	184.15	155.58	44.45	44.45	4	9/16-12NC
XTH45	XTH45	212.73	38.10	150.66	203.20	174.63	53.98	39.68	4	5/8-11NC
XTH50	XTH50	254.00	44.45	184.00	242.88	211.14	63.50	44.45	4	3/4-16NC
XTH60	XTH60	298.45	49.21	218.93	285.75	250.83	69.85	44.45	4	7/8-9NC

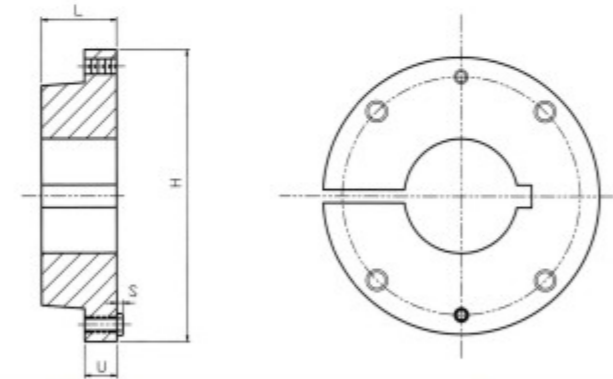
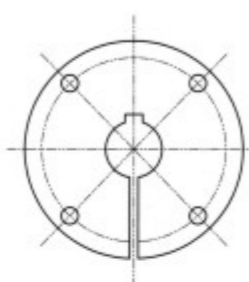


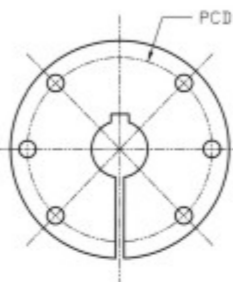
Table No2--STOCK XT BUSHINGS

Bushing Part No.	Stock Bores	Key Seat	Key Supplied
XTB15	5/8-7/8	3/16 x 3/32	none
	1-1 1/4	1/4 x 1/8	none
	1 7/16-1 1/2	3/8 x 1/8	3/8 x 5/16 x 1 1/8
XTB20	3/4-7/8	3/16 x 3/32	none
	1-1 1/4	1/4 x 1/8	none
	1 7/16-1 11/16	3/8 x 3/16	none
XTB25	1 15/16-2	1/2 x 3/16	1/2 x 7/16 x 1 3/8
	1-1 1/4	1/4 x 1/8	none
	1 7/16-1 11/16	3/8 x 3/16	none
XTB30	1 15/16-2 3/16	1/2 x 1/4	none
	2 7/16	5/8 x 1/8	5/8 x 7/16 x 1 3/4
	1 7/16-1 11/16	3/8 x 3/16	none
XTB35	1 15/16-2 3/16	1/2 x 1/4	none
	2 7/16-2 11/16	5/8 x 5/16	none
	2 15/16	3/4 x 3/16	3/4 x 9/16 x 2
XTB40	1 15/16-2 3/16	1/2 x 1/4	none
	2 7/16-2 11/16	5/8 x 5/16	none
	2 15/16	3/4 x 3/8	7/8 x 3/4 x 2 1/2
XTB45	2 7/16	5/8 x 5/16	none
	2 15/16	3/4 x 3/8	none
	3 7/16	7/8 x 7/16	1 x 7/8 x 2 3/4
XTB50	3 15/16	1 x 3/8	none
	3 7/16	7/8 x 7/16	none
	3 15/16	1 x 1/2	1 x 7/8 x 3 1/4
XTB60	4 7/16	1 x 3/8	none
	3 15/16-4 7/16	1 x 1/2	none
	4 15/16	1 1/4 x 5/8	none
XTB60	5 7/16-5 1/2	1 1/4 x 5/8	none
	5 15/16-6	1 1/2 x 3/4	none

Bushing Part No.	Dimensions				Cap Screws	
	L	U	H	S	No.	Size
XTB15	1 1/8	3/8	2 7/8	5/32	4	1/4 x 1
XTB20	1 13/32	15/32	3 3/4	7/32	4	5/16 x 1 1/4
XTB25	1 7/8	5/8	4 7/16	1/1	4	3/8 x 1 3/4
XTB30	2 1/16	11/16	5 5/16	9/32	4	7/16 x 1 1/2
XTB35	2 15/32	25/32	6 5/16	5/16	4	1/2 x 1 3/4
XTB40	2 13/16	7/8	7 1/8	3/8	4	9/16 x 2
XTB45	3 5/16	15/16	8	12/32	4	5/8 x 2 1/4
XTB50	3 3/4	1	10 1/8	15/32	4	3/4 x 2 1/2
XTB60	4 1/8	1 1/8	11 15/16	9/16	4	7/8 x 2 1/2



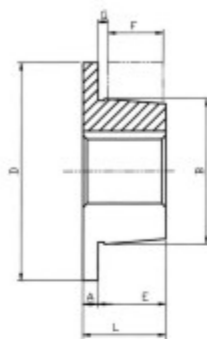
Size H



Size JA TO J



Size M



QD BUSHING

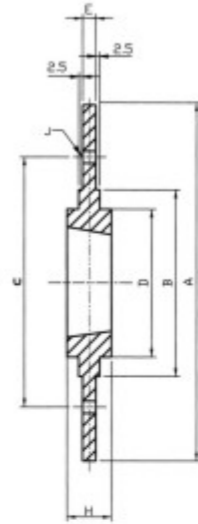
Size	Dimensions(mm)								Cap Screws Required(In)
	A	B	D	E	F	G	L	PCD	
H	7.9	41.3	63.5	25.4	22.2	3.2	31.8	50.8	2-1/4 x 3/4
JA	9.5	34.9	50.8	17.5	14.3	3.2	27.0	42.3	3-10 x 1
SH	11.1	47.6	68.3	22.2	20.6	4.8	33.3	57.2	3-1/4 x 1 3/8
SDS	12.7	55.5	81.0	22.2	19.1	4.8	34.9	68.3	3-1/4 x 1 3/8
SD	12.7	55.5	81.0	33.3	31.8	4.8	46.0	68.3	3-1/4 x 1 7/8
SK	14.3	71.4	98.4	34.9	31.8	4.8	49.2	84.1	3-5/16 x 2
SF	14.3	79.4	117.5	38.1	31.8	6.4	52.4	98.4	3-3/8 x 2
E	19.1	97.4	152.4	47.6	41.3	7.9	66.7	127.0	3-1/2 x 2 3/4
F	20.6	112.7	168.3	71.4	63.5	9.5	92.1	142.9	3-9/16 x 3 5/8
J	25.4	130.8	184.2	88.9	81.0	9.5	114.3	158.8	3-5/8 x 4 1/2
M	31.8	165.1	228.6	139.7	131.8	9.5	171.5	200.0	4-3/4 x 6 3/4
N	38.1	177.8	254.0	168.3	158.8	11.1	206.4	215.9	4-7/8 x 8 1/2
P	44.5	209.6	298.5	193.7	184.2	12.7	238.1	254.0	4-1 x 9 1/2
W	50.8	265.1	381.0	238.1	228.6	12.7	288.9	323.9	4-1 1/8 x 11 1/2

Inch Bore

Size	Bore	Key Way
H	1/2-1 1/4	STD
	1 5/16-1 3/8	5/16-1/16
	1 7/16-1 1/2	3/8-1/16
JA	1/2 1	STD
	1 1/16-1 1/8	1/4-1/16
	1 3/16	1/4-1/16
SH	1 1/4	NOK.W.
	1/2-1 3/8	STD
	1 7/16-1 1/2	3/8 x 1/16
SDS	1 9/16-1 5/8	3/8 x 1/16
	1 11/16	NOK.W.
	1/2-1 11/16	STD
SD	1 3/4	3/8 x 1/8
	1 13/16	1/2 x 1/8
	1 7/8-1 15/16	1/2 x 1/16
SK	2	NOK.W.
	1/2-1 11/16	STD
	1 3/4	3/8 x 1/8
SF	1 13/16	1/2 x 1/8
	1 7/8	1/2 x 1/16
	1 15/16	1/2 x 1/16
E	2	NOK.W.
	1/2-2 1/8	STD
	2 3/16-2 1/4	1/2 x 1/8
F	2 5/16-2 1/2	5/8 x 1/16
	2 9/16-2 5/8	NOK.W.
	1/2-2 1/4	STD
J	2 5/16-2 1/2	5/8 x 3/16
	2 9/16-2 3/4	5/8 x 1/16
	2 13/16-2 7/8	3/4 x 1/16
M	2 15/16	3/4 x 1/32
	7/8-2 7/8	STD
	2 15/16-3 1/4	3/4 x 1/8
N	3 3/8-3 1/2	7/8 x 1/16
	1-3 5/16	STD
	3 3/8-3 3/4	7/8 x 3/16
P	3 7/8-3 15/16	1 x 1/8
	4	NONE
	1 1/4-3 3/4	STD
Q	3 13/16-4 1/2	1 x 1/8
	2-4 3/4	STD
	4 13/16-5 1/2	1 1/4 x 1/4
R	2 7/16-5	STD
	5 1/8-5 1/2	1 1/4 x 1/4
	5 9/16-6	1 1/4 x 1/4
S	2 15/16-5 15/16	STD
	6-6 1/2	1 1/2 x 1/4
	6 9/16-7	1 3/4 x 1/8
T	4-7 1/2	STD
	7 9/16-8 1/2	2 x 1/4

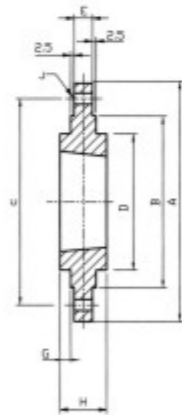
Millimeter Bore

Bushing	Bore MM	Key WXT
SH	24, 25	8x7
	28, 30	
	32, 35	10x8
SDS	24, 25	8x7
	28, 30	
	32, 38	10x8
SD	38	12x8
	40, 42	
	24, 25	8x7
28, 30		
32, 35	10x8	
SK	38	12x8
	40, 42	
	48, 50	14x9
SF	55	16x10
	28, 30	8x7
	32, 35	
E	38	10x8
	40, 42	
	48, 50	14x9
F	55	16x10
	28, 30	8x7
	32, 35	
J	40, 42	12x8
	48, 50	
	55	16x10
M	60, 65	18x11
	70, 75	
	80, 85	22x14
N	90	25x14
	48, 50	14x9
	55	
P	60, 65	18x11
	70, 75	
	80, 85	22x14
Q	90, 95	25x14
	100	
	50	14x9
R	55	16x10
	60, 65	
	70, 75	20x12
S	80, 85	22x14
	90, 95	
	100	28x16



BOLT-ON HUBS

Hub Reference	Bush Number	A	B	C	D	H	E	J No. x Diam
SM12	1210	180	90	135	70	25	6.5	6 x 7.5
SM16-1	1610	200	110	150	85	25	7.5	6 x 7.5
SM16-2	1615	200	110	150	85	38	7.5	6 x 7.5
SM20	2012	270	140	190	110	32	8.5	6 x 9.5
SM25	2517	340	170	240	125	45	9.5	8 x 11.5
SM30-1	3020	430	220	300	150	51	13.5	8 x 13.5
SM30-2	3020	485	250	340	150	51	13.5	8 x 13.5



Hub Reference	Bush Number	A	B	C	D	H	G	E	J No. x Diam
BF12	1210	120	80	100	80	25	10	6.5	6 x 7.5
BF16	1610	130	90	110	90	25	10	6.5	6 x 7.5
BF20	2012	145	100	125	100	32	13	8.5	6 x 9.5
BF25	2517	185	130	155	119	44	20	11.5	6 x 11.5
BF30	3020	220	165	190	147	50	20	11.5	6 x 13.5

Helical Geared Motor R Series Helical Geared Motor F Series Helical-bevel Geared Motor K Series Helical-worm Geared Motor S Series New Type

NMRV Worm Gearbox VF.. WPA WPS WPO

WPX WPWEDKO WPEA MBW/UDW Steplless Speed Variator MBLUDL Steplless Speed Variator

BW BWD BWK BWEK BL

BLD AC Gear Motor AC Gear Motor AC Gear Motor AC Gear Motor

A B C D E F

Auto gate rack Nylon Rack Roller Chain

Sprocket V Belt Pulley

T..-U-LR T..-1-D T..-1-R H B