

● 订购方式 DESIGNATION

减速箱铭牌

GH 22 (15) - 30K - G1 LD

1 2 3 4 5 6

- 1 机型代号Types: GH GV GHM GVM GHD GVD
- 2 出力轴 Output shaft: 18、22、28、32……
- 3 特殊出力轴Special output shaft: 20、24、30……
无特殊时不标记 No special without mark
- 4 减速比Ratio: 3、5、10、...1800
- 5 依出力轴看接线盒方向
View from output shaft
G1: 左方向 Left (标准型) (STD)
G2: 右方向 Right
G3: 上方向 Upper
G4: 下方向 Lower
- 6 入线口方向 Wire inlet
T: 向上 Top
D: 向下 Down
F: 向前 Forward
B: 向后 Back
L: 向左 Left
R: 向右 Right
- 7 公司代号A:

电机铭牌

A 14 D 400 C - S1 B R 6

7 8 9 10 11 12 13 14 15

- 8 机座代号Types: 11 12 14 16 18
- 9 电机类型代号 Motor types:
D: 单相电容运转异步电动机
L: 单相双值电容异步电动机
S: 高效三相异步电动机
- 10 马力Capacity: 100W-3700W
- 11 电源Power:
C: 1Phase 220V 50Hz
S: 3Phase 220V/380V 50Hz
A: 1Phase 110V 60Hz
- 12 S1: 1#箱体小速比齿轴 L1: 1#箱体大速比齿轴
S2: 2#箱体小速比齿轴 L2: 2#箱体大速比齿轴
.....
- 13 B: 断电刹车器 Brakeunit
AB: 手释放刹车器 With release brake unit
D: DC24V送电刹车器 DC24V Brake
- 14 R: 调速电机 Speed control motor
普通电机不标示
- 15 2: 2极电机 2P 6: 6极电机 6P 8: 8极电机 8P
无标示为4极电机 4P motor without mark

接线盒方向选定 TERMINAL BOX DIRECTION

TYPE	G1-左方向 Left side	G2-右方向 Right side	G3-上方向 Upper side	G4-下方向 Lower side
GH				
	G1	G2	G3	G4
GV				
	G1	G2	G3	G4
入线口方向 WIRE INLET DIRECTION				
	LD LT	RD RT	TL TR	DL DR
	LF LB	RF RB	TF TB	DF DB

● 技术资料 TECHNICAL DATA

标准电机规范表 Standard Motor Specification

项目 ITEM	三相交流马达 3-PHASE MOTOR		单相交流马达 1-PHASE MOTOR	
保证等级 PROTECTION	全密闭外扇型 IP-54TOTALLY ENCLOSED FAN COOLED TYPE		半密闭外扇区型 SEMI-ENCLOSED FAN COOLED TYPE	
外壳材质 HOUSING MATERIAL	0.1-3.7KW	铝合金 ALUMALLOY	0.1-1.5KW	铝合金 ALUMALLOY
启动方式 STARTING	全压启动 DIRECT START		0.1-0.2KW	运转电容启动 CAPACITON
			0.4-1.5KW	启动电容启动+离心开关
定格 TIME RATING	连续运转 CONTINUOUS RUNNING		连续运转 CONTINUOUS RUNNING	
绝缘等级 INSULATION	F-绝缘 B-绝缘 F-CLASS B-CLASS		F-绝缘 B-绝缘 F-CLASS B-CLASS	
适用环境 ENVIRONMENT	温度: -10℃ TO +40℃ (TEMPERATURE BETWEEN -10℃ TO +40℃) 湿度: 90%以下 (HUMIDITY LESS THAN 90%)			
适用电压 VOLTAGE	50HZ	220V, 230V, 240V, 380V 400V, 415V, 440V	50HZ	110V, 115V, 200V 220V, 230V
	60HZ	220V, 240V, 380V, 415V 440V, 460V, 480V, 600V	60HZ	110V, 220V, 240V
适用极数 POLE	4P		4P	
输出转速 (4P) FULL SPEED	50HZ	1340-1400RPM	50HZ	1360-1430RPM
	60HZ	1610-1740RPM	60HZ	1640-1720RPM
依据标准 STANDARD	国际/国家标准 IEC-34, CNS-10919 ACCORDING TO IEC-34, CNS-10919			
海拔 SEALEVEL				
接线盒 TERMINAL BOX	根据客户要求使用, 有IP55级铝接线盒、防水型接线盒及不锈钢接线盒 According to the customer request to use, have grade aluminum junction box, Ip55 waterproof model junction box and stainless steel junction box			

三相电压全负载电流值 3-phase/4-poles full load ampere

输出马力 CAPACITY	50HZ-4P					60HZ-4P				
	220V	380V	415V	440V	RPM	220V	380V	440V	460V	RPM
100W	0.60	0.40	0.32	0.30	1410	0.6	0.40	0.30	0.29	1720
200W	1.15	0.67	0.70	0.58	1410	1.1	0.63	0.55	0.52	1720
400W	2.14	1.24	1.13	1.07	1420	1.9	1.10	0.95	0.91	1730
750W	3.67	2.13	1.94	1.84	1420	3.4	1.96	1.70	1.63	1730
1500W	6.59	3.82	3.94	3.30	1430	6.1	3.53	3.05	2.92	1740
2200W	8.94	5.18	4.74	4.47	1430	8.7	5.04	4.35	4.16	1725
3700W	13.85	8.03	7.34	6.93	1440	13.5	7.82	6.75	6.46	1745

单相电压全负载电流值 1-phase/4-poles full load ampere

输出马力 CAPACITY	50HZ-4P			60HZ-4P		
	110V	220V	RPM	110V	220V	RPM
100W	4.00	2.00	1410	3.80	1.90	1720
200W	5.00	2.50	1410	4.60	2.30	1720
400W	8.40	4.20	1420	7.80	3.90	1730
750W	14.2	7.10	1420	12.9	6.40	1730
1500W	26.0	13.0	1430	23.4	11.70	1740

● 技术资料 TECHNICAL DATA

单相马达电容器规格 1-phase motor capacitor

输出马力 CAPACITY	单电容型 SINGLE-CAPACITOR TYPE	双电容型 DOUBLE-CAPACITOR TYPE	
		启动电容 STARTING CAPACITOR	运转电容 RUNNING CAPACITOR
75W	5 μF	--	--
100W	6 μF	--	--
200W	12 μF	--	--
400W	--	100 μF	16 μF
750W	--	150 μF	20 μF

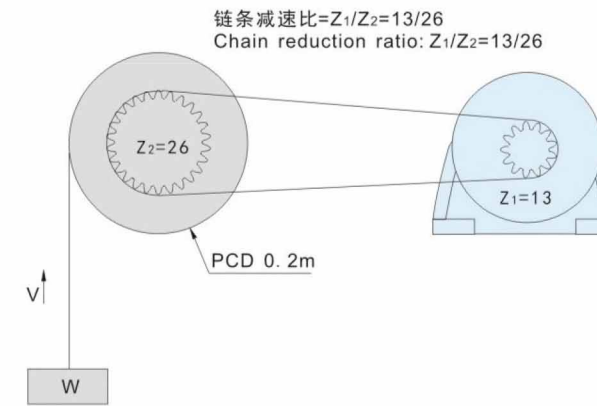
输出扭矩表 Output Torque

标准型 Normal duty type

KG-M

减速比 RATIO	输出转速 OUTPUT R.P.M		输出扭矩 OUTPUT TORQUE													
			0.1KW		0.2KW		0.4KW		0.75KW		1.5KW		2.2KW		3.7KW	
	50HZ	60HZ	50HZ	60HZ	50HZ	60HZ	50HZ	60HZ	50HZ	60HZ	50HZ	60HZ	50HZ	60HZ	50HZ	60HZ
3	465	570	0.19	0.16	0.37	0.31	0.70	0.60	1.30	1.10	2.60	2.20	3.80	3.20	6.00	5.50
5	300	360	0.31	0.26	0.62	0.52	1.20	1.00	2.20	1.90	4.50	3.80	6.72	5.60	11.0	10.1
10	150	180	0.61	0.52	1.24	1.04	2.40	2.00	4.50	3.80	9.10	7.60	13.7	11.2	22.0	20.0
15	100	120	0.91	0.76	1.80	1.50	3.60	3.00	6.80	5.70	13.5	11.3	20.1	16.8	32.6	29.8
20	75	90	1.20	1.00	2.40	2.00	4.80	4.00	9.00	7.50	18.1	15.1	26.8	22.4	43.6	36.0
25	60	72	1.40	1.20	3.00	2.50	6.00	5.00	11.2	9.40	22.6	18.9	33.6	28.0	53.9	49.53
30	50	60	1.80	1.50	3.60	3.00	7.30	6.00	13.5	11.3	27.1	22.6	40.3	33.6	64.7	58.8
40	37	45	2.20	1.90	4.60	3.90	9.30	7.80	17.5	14.6	34.9	29.1	52.0	43.4	86.3	78.4
45	33	40	2.70	2.20	5.40	4.40	10.9	9.10	20.6	17.0	41.4	34.0	49.8	49.6	98.5	81.7
50	30	36	2.80	2.40	5.70	4.80	11.6	9.70	21.9	18.3	43.6	36.4	65.1	54.3	107	97.0
60	25	30	3.40	2.90	6.90	5.80	13.9	11.6	26.2	21.9	52.4	43.7	78.1	65.1	127	115
70	21	25	4.30	3.60	8.00	6.80	16.2	13.5	31.5	26.3	62.4	52.0	92.5	77.1		
80	19	23	4.80	4.00	9.20	7.70	18.4	15.4	35.5	29.6	70.8	59.0	105	87.5		
90	17	20	5.20	4.40	10.3	8.60	20.7	17.3	39.3	32.8	77.1	64.3	113	94.3		
100	15	18	5.80	4.90	11.5	9.60	23.0	19.2	43.2	36.0	83.7	69.8	126	105		
120	12	15	6.90	5.80	13.8	11.5	27.7	23.1	51.8	43.2	101	83.7	150	145		
140	11	13	8.00	6.70	16.0	13.4	32.0	26.7	59.7	49.8	116	96.8				
160	9	11	9.10	7.60	18.3	15.3	36.3	30.3	68.0	56.7	132	110				
180	8	10	10.3	8.60	20.7	17.3	40.8	34.0	76.8	64.0	148	123				
200	7	9	11.6	9.70	22.9	19.1	43.2	36.0	82.8	69.0						

● 减速机之选定范例 THE SELECTED REDUCER EXAMPLES



搬运物总重量: W = 300KG
Total weight of load

搬送速度: V=9.5m/min
Conveyance speed

链传动效率: η1=1
Sprocket transmission efficiency

减速机传动效率: η2=0.9
Reducer transmission efficiency

运转时间: 2小时/日
Operation time

起动次数: 1回/分
Times of starting: 1time/min

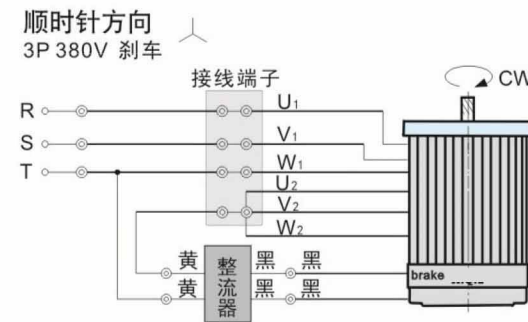
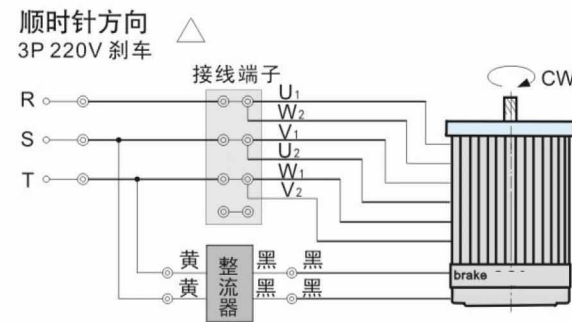
使用电源: 3P220V, 50Hz
Power applied

	选定之注意事项 Considerations in selection	计算范例 Calculation examples
减速比 Ratio	由必要的输入轴回转数及出力轴回转数来选定减速比 Reduction ratio should be decided by input shaft revolutions output shaft revolutions necessary 1.先求出输送带滚轮回转数(N1) Find conveyor wheel revolutions (N1) $N1 = \text{搬送速度} / (\text{滚轮直径} \times \pi)$ $N1 = \text{Conveyance speed} / (\text{wheel diameter} \times \pi)$ 2.再求出减速机出力轴回转数(N2) Find reducer output shaft revolutions(N2) $N2 = N1 \times \text{链轮齿数减速比}$ $N2 = N1 \times \text{Chain reduction ratio}$ 3.以三相60Hz的马达计算减速比 Calculate reduction ratio of three-phase motor with frequency of 60 Hz $T = \text{出力轴回转数} / \text{输入轴回转数} (\text{电机转速})$ $T = \text{output shaft revolutions} / \text{input shaft revolutions} (\text{motor's rpm})$	1. $N1 = V / (\text{PCD} \times \pi)$ $= 9.5 / (0.2 \times 3.14) = 15 \text{r/min}$ 2. $N2 = N1 / \text{链条减速比}$ $= 15 / (1/2) = 30 \text{r/min}$ 3. $t = \text{出力轴回转数} / \text{输入轴回转数}$ $= \text{output shaft revolutions} / \text{input shaft revolutions}$ $= 30 / 1500 = 1/50$
扭力 Torque	决定减速比后,由使用机械之条件换算其扭力 After reduction ratio is decided, the corresponding torque can be found according to its mechanical conditions 1.先算出输送带滚轮之扭力(T1) $T1 = (m \times \text{荷重} \times \text{滚轮半径}) / \eta1$ firstly find torque (T1) of conveyance wheel ratio $T1 = (m \times \text{load} \times \text{wheel radius}) / \eta1$ 2.再换算成减速机出力轴所需扭力(T2) Then convert the torque (T1) to the torque (T2) necessary for the output shaft of reducer $T2 = (T1 \times \text{链轮减速比}) / \eta2$ $T2 = (T1 \times \text{sprocket reduction ratio}) / \eta2$	1. $T1 = W \times (\text{PCD}/2) \times \eta1$ $= 300 \times (0.2/2) \times 1 = 30 \text{kg.m}$ 2. $T2 = (T1 \times \text{链轮减速比}) / \eta2$ $T2 = (300 \times 1/2) / 0.9 = 16.7 \text{kg.m}$
负荷条件 Load conditions	1.根据运转条件算出修正后的扭力(T3) Find the adjusted torque (T3) according to operation conditions $T3 = T2 \times \text{运转条件} (\text{系数K,正常情况下取1,负载越重, K值越高。})$ $T3 = T2 \times \text{operation conditions} (\text{coefficient K, which is 1 in normal condition and becomes higher when loads get heavier})$	$T3 = T2 \times K$ $= 16.7 \times 1 = 16.7 \text{kg.m}$

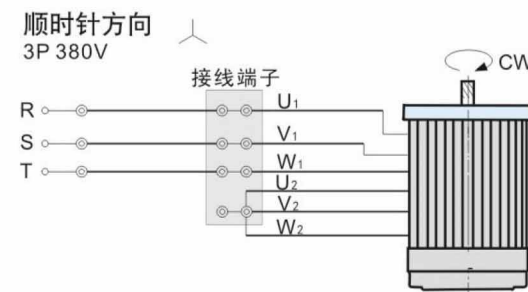
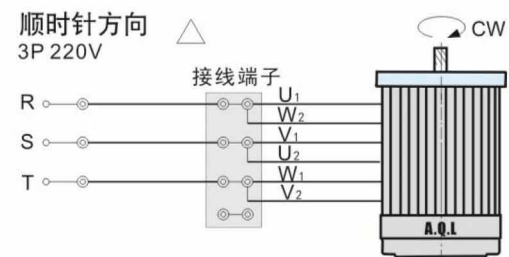
按以上参数,得出减速机的减速比为1/50,扭力为16.7KG.M,参照齿轮减速机性能表,对比得出选用减速机为70W。
 In accordance with the parameters above, the reduction ratio of the reducer is 1/50, torque 16.7kgm. by reference to the performance table, we can find the power for reducer selected is 750w.

● 接线图 CONNECTION DIAGRAMS

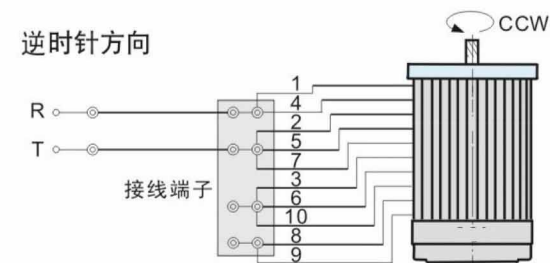
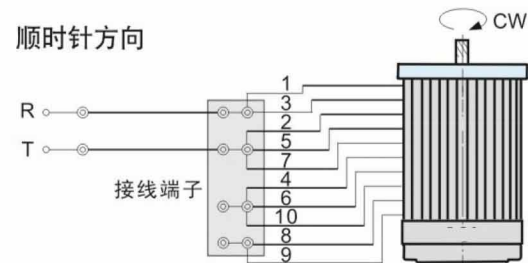
■ 三相220V/380V电磁制动 3 Phase 220V/380V brake



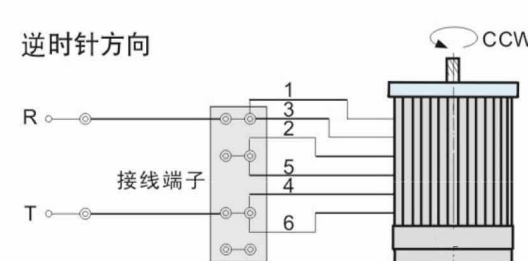
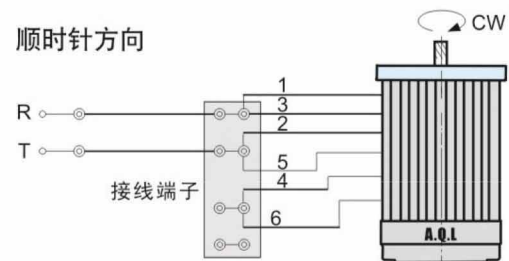
■ 三相220V/380V 3 Phase 220V/380V



■ 单相220V双值电容



■ 单相220V电容运转



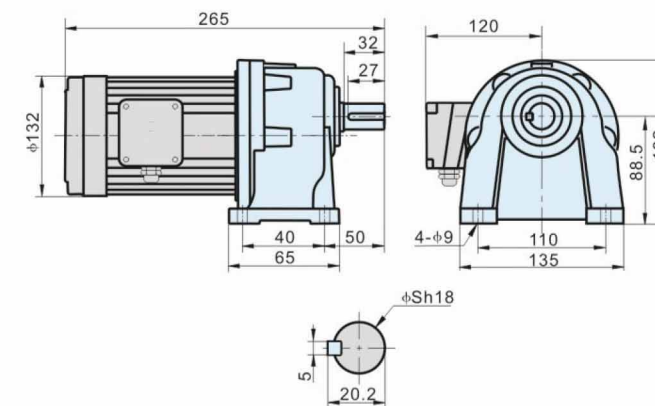
0.1kW

GH型卧式三相/单相(刹车)
GH. Horizontal Type
3 Phase/1 Phase (brake) Gear Motor

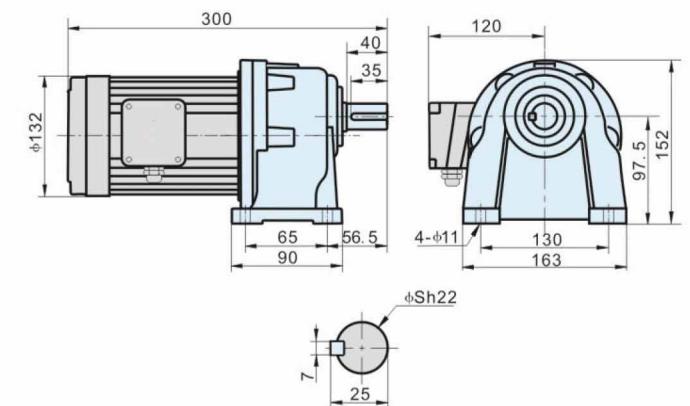


● 尺寸图 DIMENSIONS

■ GH18-(3~60)K+A11S(D)100S(C)(B)
GH18-(70~200)K+A11S(D)100S(C)(B) 轻负载缩框



■ GH22-(70~200)K+A11S(D)100S(C)(B)



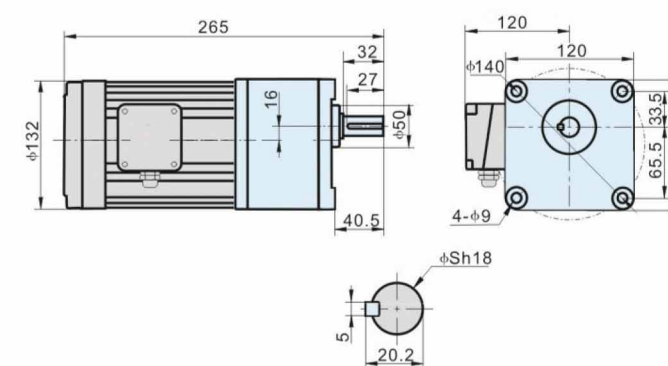
0.1kW

GV型立式三相/单相(刹车)
GV. Vertical Type
3 Phase/1 Phase (brake) Gear Motor

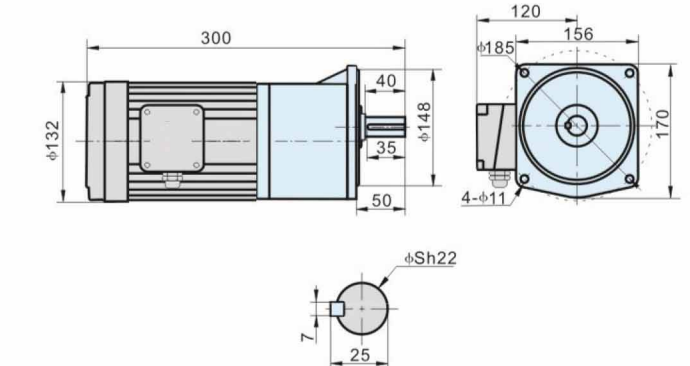


● 尺寸图 DIMENSIONS

■ GV18-(3~60)K+A11S(D)100S(C)(B)
GV18-(70~200)K+A11S(D)100S(C)(B) 轻负载缩框



■ GV22-(70~200)K+A11S(D)100S(C)(B)



HONY 中型齿轮减速电机

GEAR REDUCTION MOTOR

0.2kW

GH型卧式三相/单相 (刹车)

GH. Horizontal Type

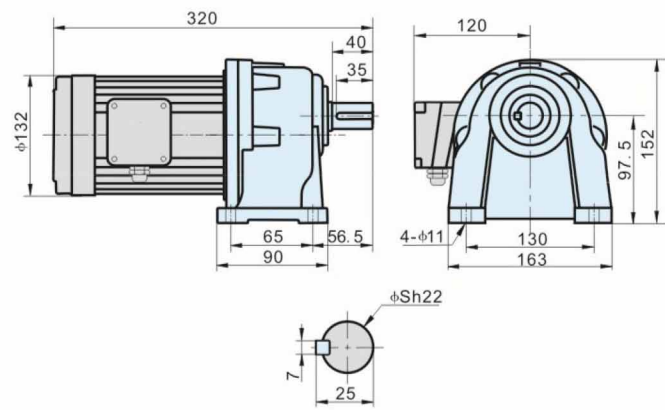
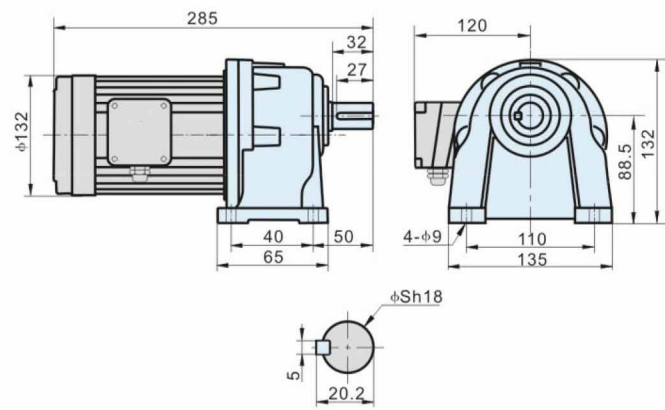
3 Phase/1 Phase (brake) Gear Motor

尺寸图 DIMENSIONS

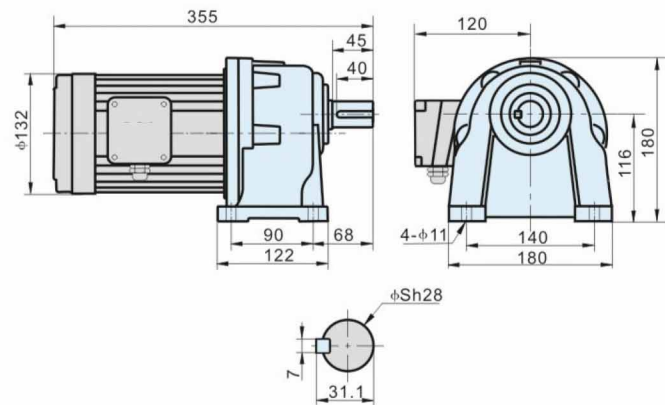
- GH18-(3~10)K+A11S(D)200S(C)(B)
GH18-(15~90)K+A11S(D)200S(C)(B) 轻负载缩框



- GH22-(12.5~90)K+A11S(D)200S(C)(B)
GH22-(100~200)K+A11S(D)200S(C)(B) 轻负载缩框



- GH28-(100~200)K+A11S(D)200S(C)(B)



HONY 中型齿轮减速电机

GEAR REDUCTION MOTOR

0.2kW

GV型立式三相/单相 (刹车)

GV GVB. Vertical Type

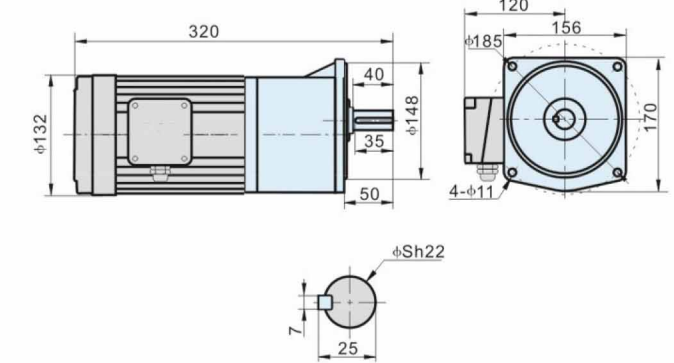
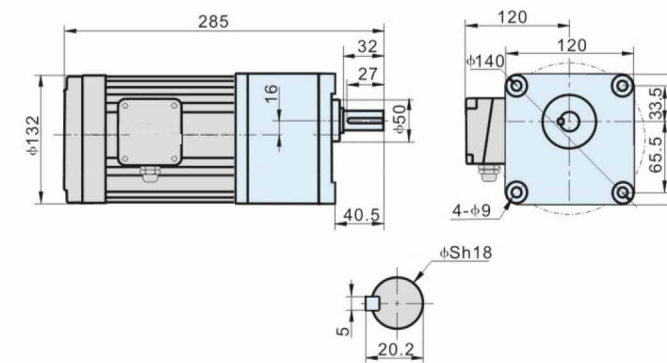
3 Phase/1 Phase (brake) Gear Motor

尺寸图 DIMENSIONS

- GV18-(3~10)K+A11S(D)200S(C)(B)
GV18-(15~90)K+A11S(D)200S(C)(B) 轻负载缩框

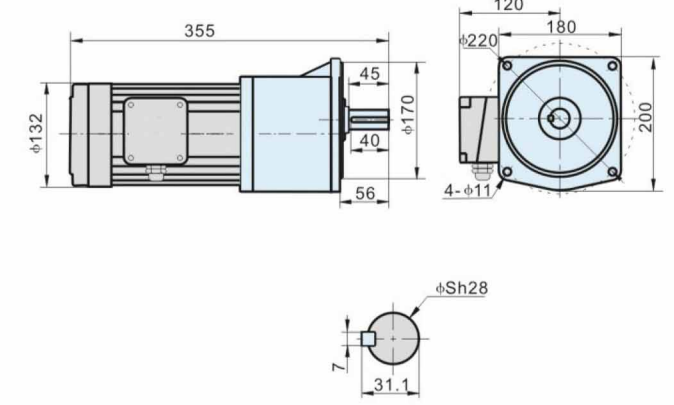
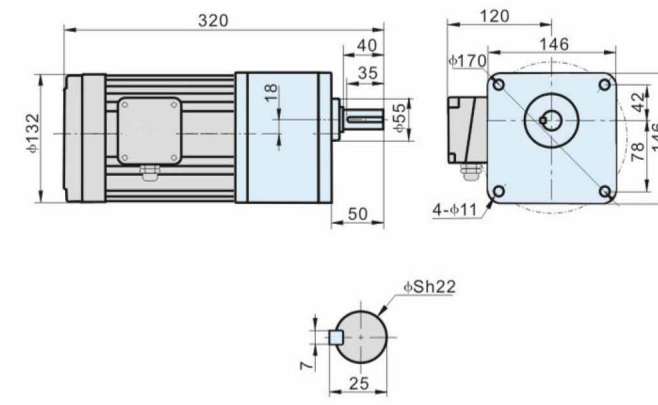


- GV22-(12.5~90)K+A11S(D)200S(C)(B)
GV22-(100~200)K+A11S(D)200S(C)(B) 轻负载缩框



- GVB22-(12.5~90)K+A11S(D)200S(C)(B)
GVB22-(100~200)K+A11S(D)200S(C)(B) 轻负载缩框
B型法兰 B TYPE OUTPUT FLANGE

- GV28-(100~200)K+A11S(D)200S(C)(B)



0.4kW

GH型卧式三相/单相 (刹车)

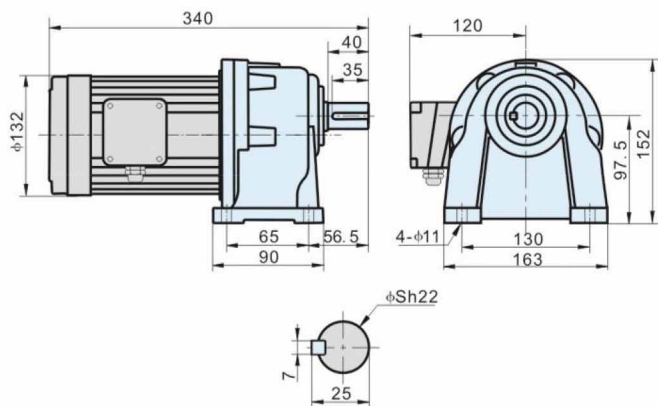
GH. Horizontal Type

3 Phase/1 Phase (brake) Gear Motor

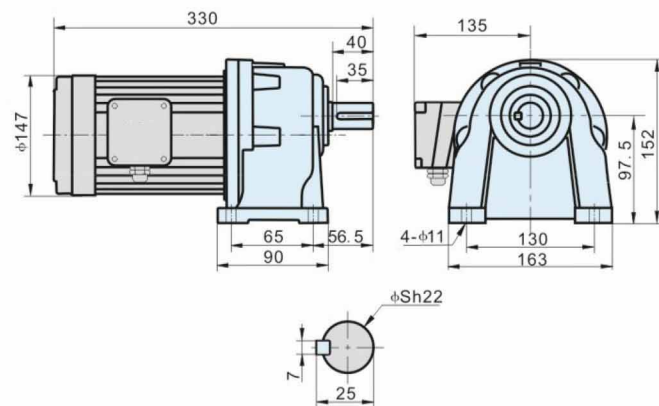


● 尺寸图 DIMENSIONS

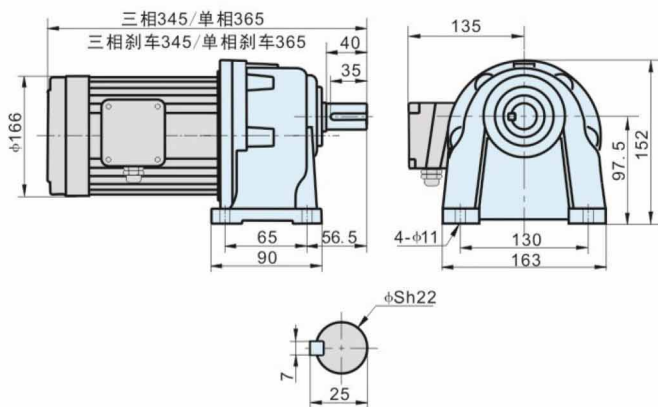
- GH22-(3~10)K+A11S(D)400S(C)(B)
- GH22-(15~90)K+A11S(D)400S(C)(B) 轻负载缩框



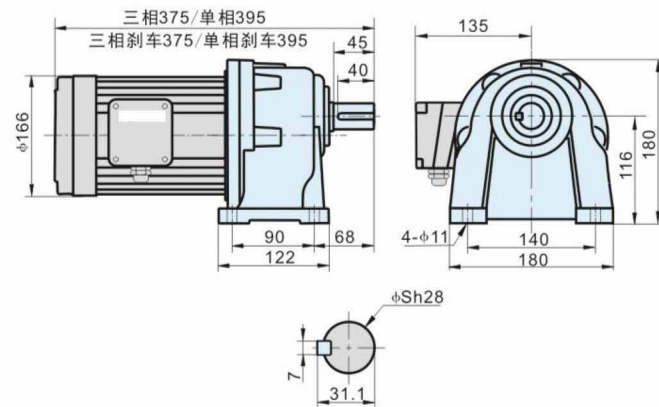
- GH22-(3~10)K+A12S(D)400S(C)(B)
- GH22-(15~90)K+A12S(D)400S(C)(B) 轻负载缩框



- GH22-(3~10)K+A14S(L)400S(C)(B)
- GH22-(15~90)K+A14S(L)400S(C)(B) 轻负载缩框



- GH28-(15~90)K+A14S(L)400S(C)(B)
- GH28-(100~200)K+A14S(D)400S(C)(B) 轻负载缩框



0.4kW

GH型卧式三相/单相 (刹车)

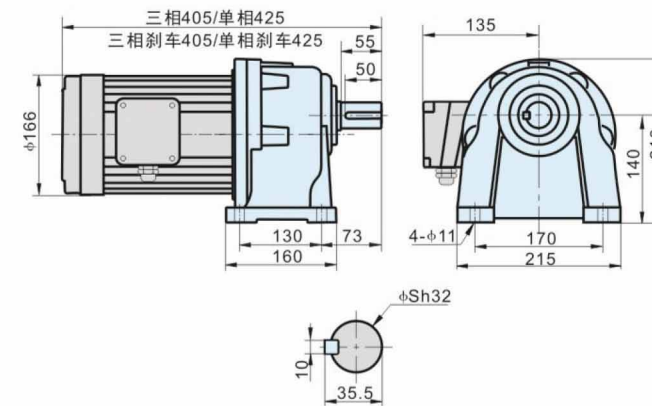
GH. Horizontal Type

3 Phase/1 Phase (brake) Gear Motor



● 尺寸图 DIMENSIONS

- GH32-(100~200)K+A14S(L)400S(C)(B)



0.4kW

GV型立式三相/单相 (刹车)

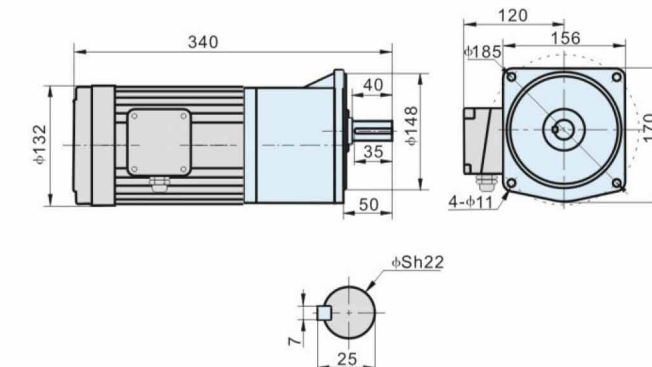
GV. Vertical Type

3 Phase/1 Phase (brake) Gear Motor

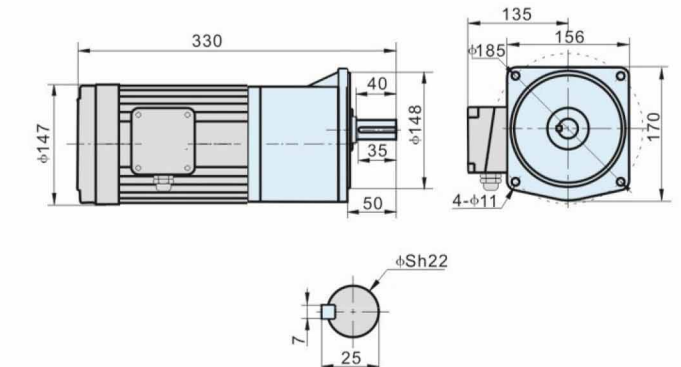


● 尺寸图 DIMENSIONS

- GV22-(3~10)K+A11S(D)400S(C)(B)
- GV22-(12.5~90)K+A11S(D)400S(C)(B) 轻负载缩框



- GV22-(3~10)K+A12S(D)400S(C)(B)
- GV22-(12.5~90)K+A12S(D)400S(C)(B) 轻负载缩框



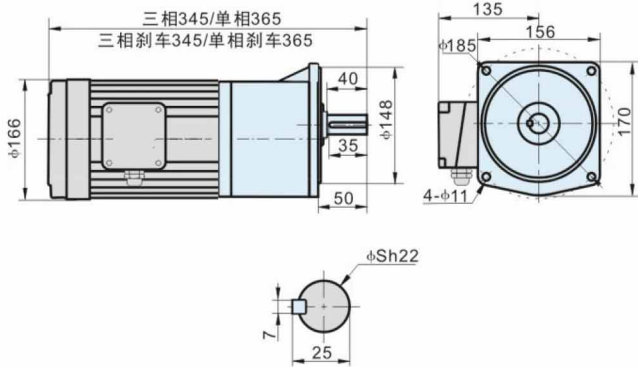
0.4kW

GV型立式三相/单相 (刹车)
GV. Vertical Type
3 Phase/1 Phase (brake) Gear Motor

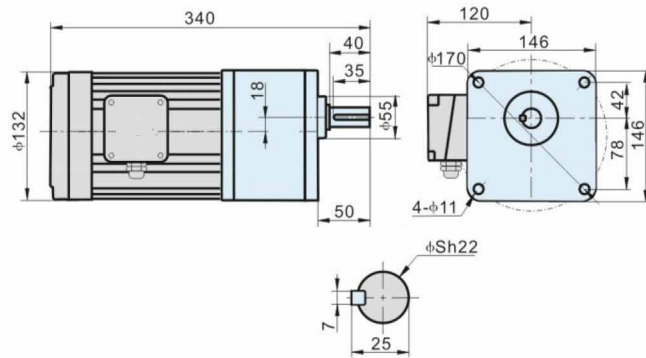


● 尺寸图 DIMENSIONS

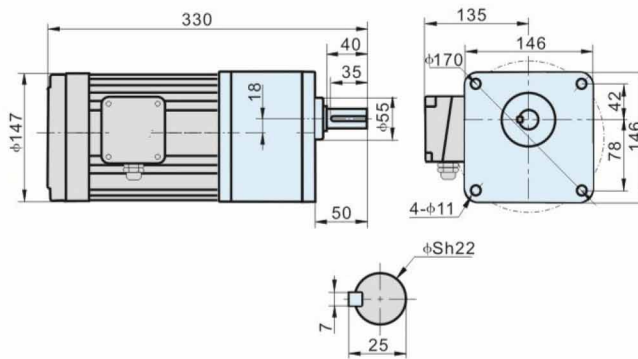
■ GV22-(3~10)K+A14S(L)400S(C)(B)
GV22-(12.5~90)K+A14S(L)400S(C)(B) 轻负载缩框



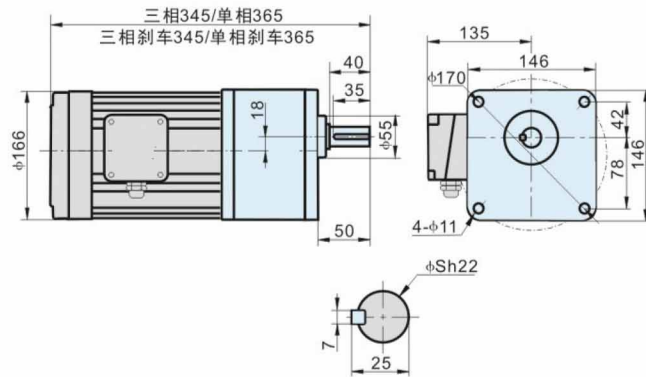
■ GVB22-(3~10)K+A11S(D)400S(C)(B)
GVB22-(12.5~90)K+A11S(D)400S(C)(B) 轻负载缩框
B型法兰 B TYPE OUTPUT FLANGE



■ GVB22-(3~10)K+A12S(D)400S(C)(B)
GVB22-(12.5~90)K+A12S(D)400S(C)(B) 轻负载缩框
B型法兰 B TYPE OUTPUT FLANGE



■ GVB22-(3~10)K+A14S(L)400S(C)(B)
GVB22-(12.5~90)K+A14S(L)400S(C)(B) 轻负载缩框
B型法兰 B TYPE OUTPUT FLANGE



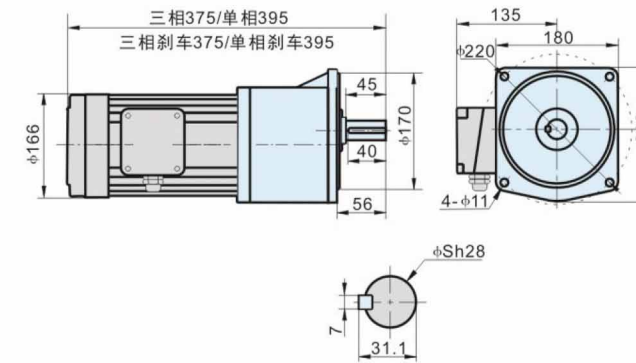
0.4kW

GV型立式三相/单相 (刹车)
GV. Vertical Type
3 Phase/1 Phase (brake) Gear Motor

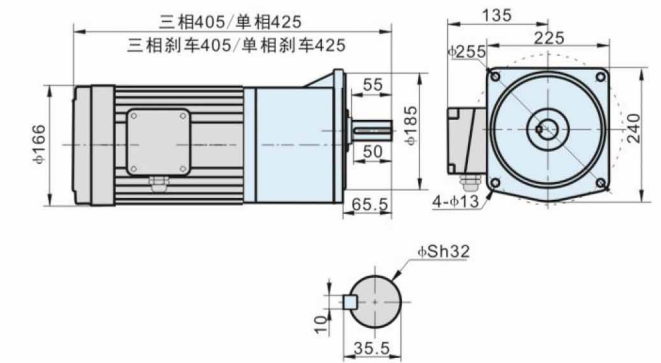


● 尺寸图 DIMENSIONS

■ GV28-(12.5~90)K+A14S(L)400S(C)(B)
GV28-(100~200)K+A14S(L)400S(C)(B) 轻负载缩框



■ GV32-(100~200)K+A14S(L)400S(C)(B)



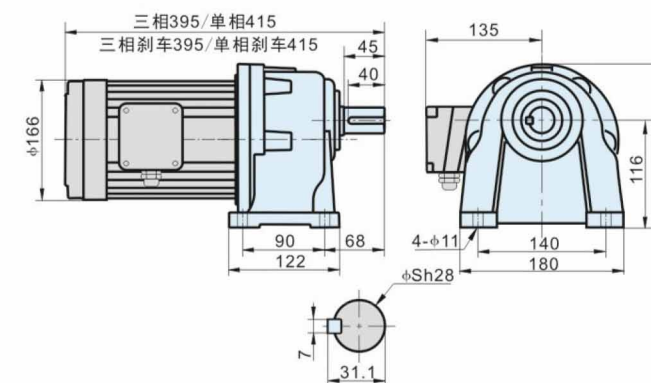
0.75kW

GH型卧式三相/单相 (刹车)
GH. Horizontal Type
3 Phase/1 Phase (brake) Gear Motor

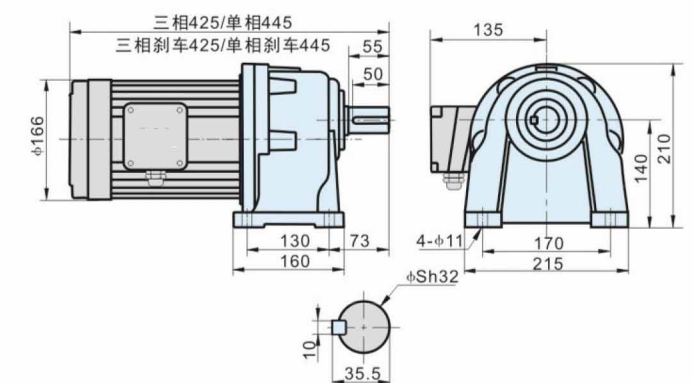


● 尺寸图 DIMENSIONS

■ GH28-(3~25)K+A14S(L)750S(C)(B)
GH28-(30~120)K+A14S(L)750S(C)(B) 轻负载缩框



■ GH32-(30~120)K+A14S(L)750S(C)(B)
GH32-(160~200)K+A14S(L)750S(C)(B) 轻负载缩框



0.75kW

GH型卧式三相/单相 (刹车)

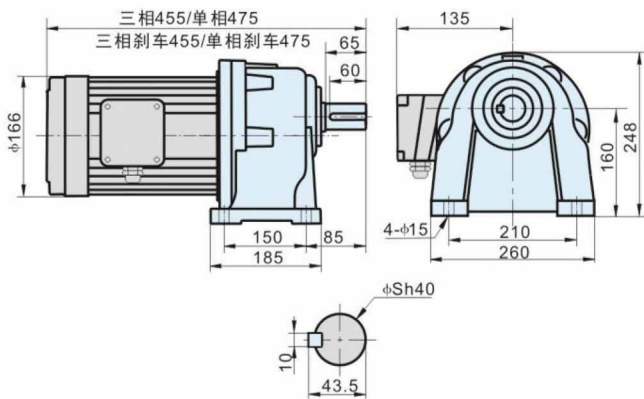
GH. Horizontal Type

3 Phase/1 Phase (brake) Gear Motor



● 尺寸图 DIMENSIONS

■ GH40-(120~200)K+A14S(L)750S(C)(B)



0.75kW

GV型立式三相/单相 (刹车)

GV. Vertical Type

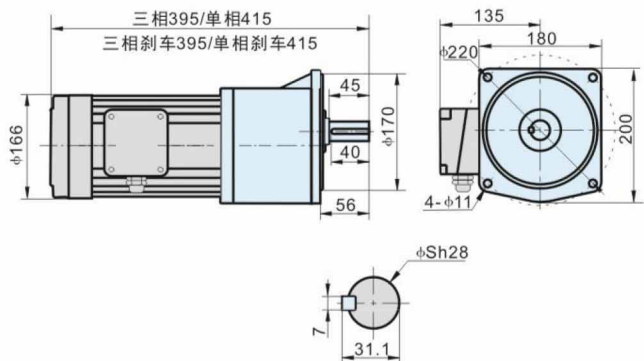
3 Phase/1 Phase (brake) Gear Motor



● 尺寸图 DIMENSIONS

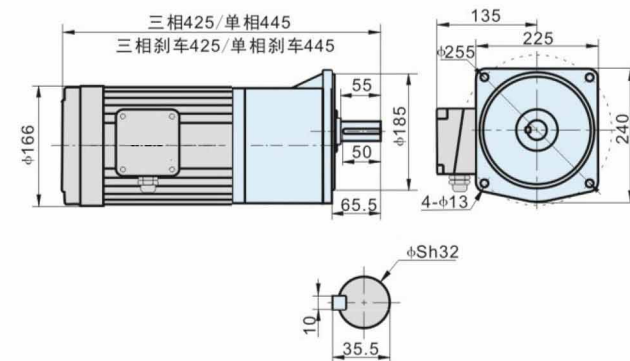
■ GV28-(3~25)K+A14S(L)750S(C)(B)

GV28-(30~120)K+A14S(L)750S(C)(B) 轻负载缩框



■ GV32-(30~120)K+A14S(L)750S(C)(B)

GV32-(160~200)K+A14S(L)750S(C)(B) 轻负载缩框



0.75kW

GV型立式三相/单相 (刹车)

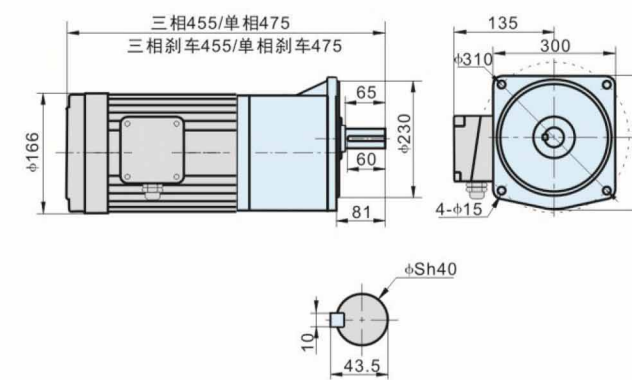
GV. Vertical Type

3 Phase/1 Phase (brake) Gear Motor



● 尺寸图 DIMENSIONS

■ GV40-(120~200)K+A14S(L)750S(C)(B)



1.5kW

GH型卧式三相/单相 (刹车)

GH. Horizontal Type

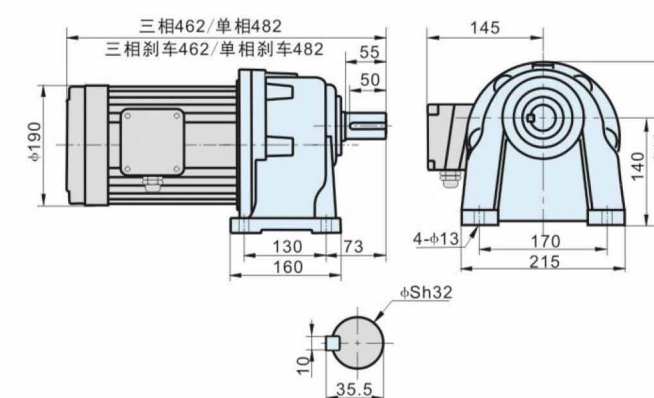
3 Phase/1 Phase (brake) Gear Motor



● 尺寸图 DIMENSIONS

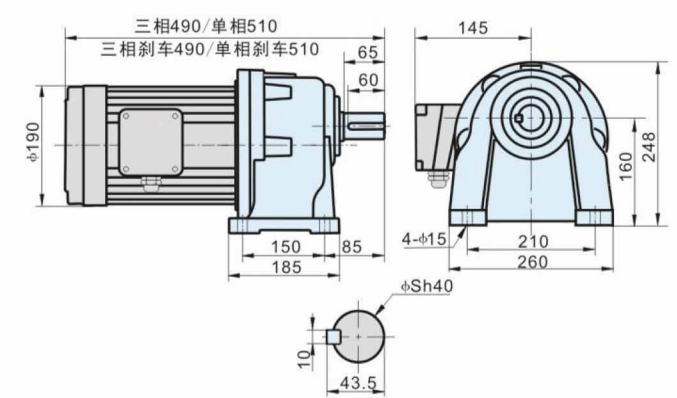
■ GH32-(3~30)K+A16S(L)1500S(C)(B)

GH32-(40~100)K+A16S(L)1500S(C)(B) 轻负载缩框



■ GH40-(40~120)K+A16S(L)1500S(C)(B)

GH40-(120~200)K+A16S(L)1500S(C)(B) 轻负载缩框

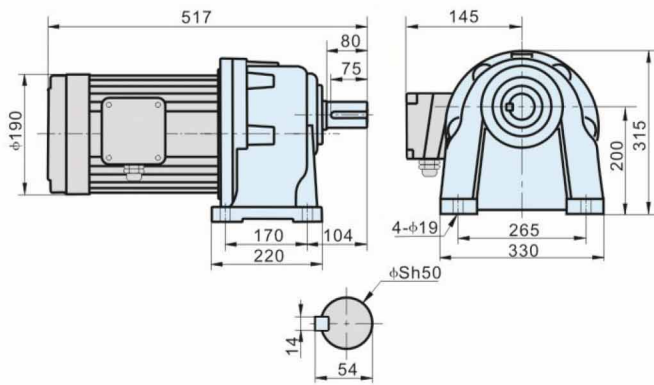


1.5kW

GH型卧式三相/单相 (刹车)
GH. Horizontal Type
3 Phase/1 Phase (brake) Gear Motor

● 尺寸图 DIMENSIONS

■ GH50-(120~180)K+A16S(L)1500S(C)(B)

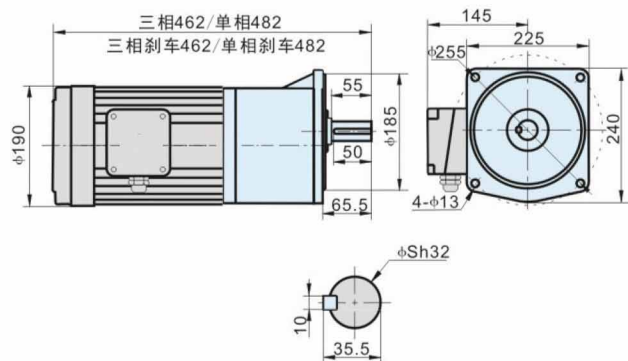


1.5kW

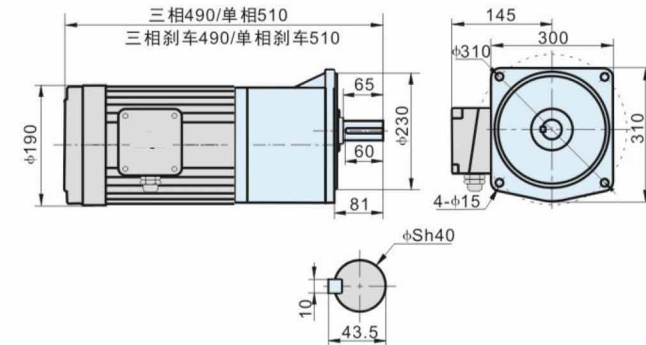
GV型立式三相/单相 (刹车)
GV. Vertical Type
3 Phase/1 Phase (brake) Gear Motor

● 尺寸图 DIMENSIONS

■ GV32-(3~30)K+A16S(L)1500S(C)(B)
GV32-(40~100)K+A16S(L)1500S(C)(B) 轻负载缩框



■ GV40-(40~120)K+A16S(L)1500S(C)(B)
GV40-(120~160)K+A16S(L)1500S(C)(B) 轻负载缩框

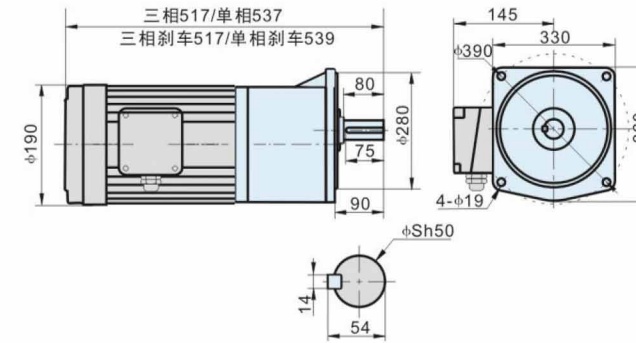


1.5kW

GV型立式三相/单相 (刹车)
GV. Vertical Type
3 Phase/1 Phase (brake) Gear Motor

● 尺寸图 DIMENSIONS

■ GV50-(120~180)K+A16S(L)1500S(C)(B)

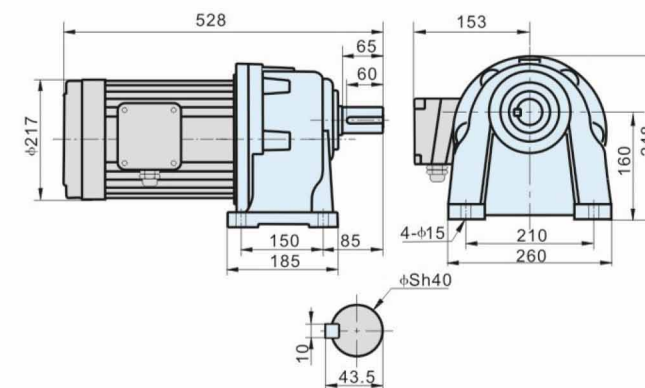


2.2kW

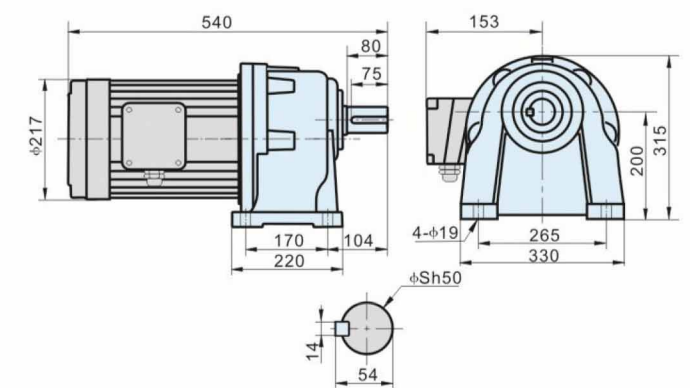
GH型卧式三相 (刹车)
GH. Horizontal Type
3 Phase (brake) Gear Motor

● 尺寸图 DIMENSIONS

■ GH40-(3~70)K+A18S2200S(B)
GH40-(45~80)K+A18S2200S(B) 轻负载缩框



■ GH50-(50~200)K+A18S2200S(B)



HONY 中型齿轮减速电机

GEAR REDUCTION MOTOR

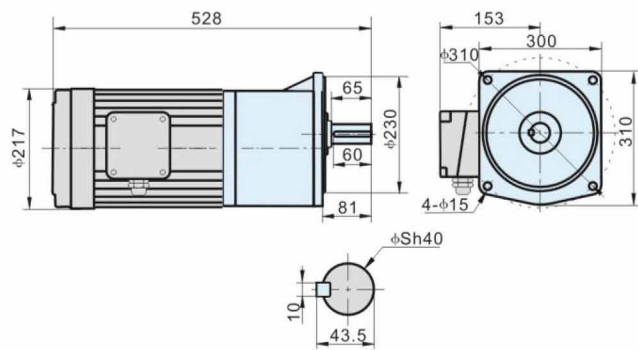
2.2kW

GV型立式三相 (刹车)
GV. Vertical Type
3 Phase (brake) Gear Motor

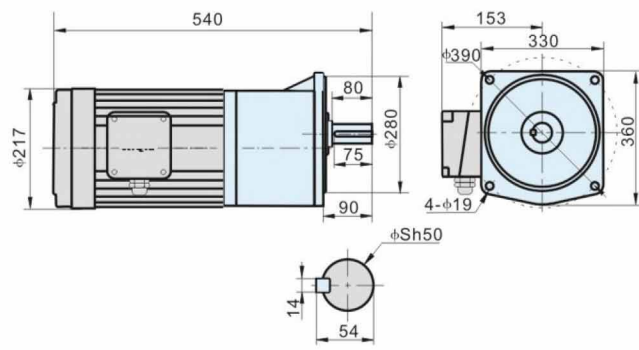


尺寸图 DIMENSIONS

GV40-(3~70)K+A18S2200S(B)
GV40-(45~80)K+A18S2200S(B) 轻负载缩框



GV50-(50~200)K+A18S2200S(B)



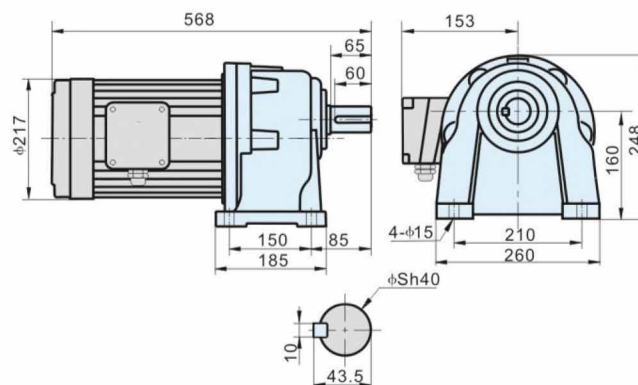
3.7kW

GH型卧式三相 (刹车)
GH. Horizontal Type
3 Phase (brake) Gear Motor

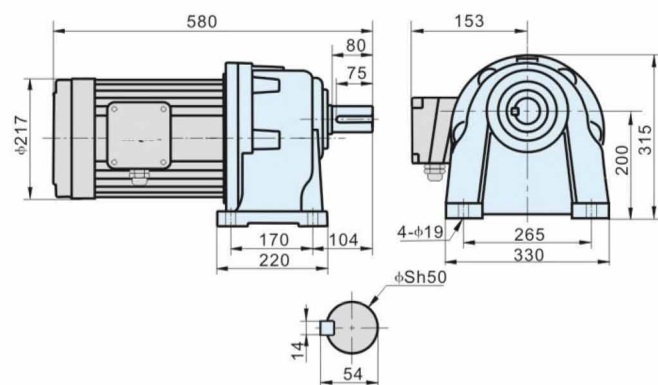


尺寸图 DIMENSIONS

GH40-(3~12.5)K+A18S3700S(B)
GH40-(15~60)K+A18S3700S(B) 轻负载缩框



GH50-(15~70)K+A18S3700S(B)



HONY 中型齿轮减速电机

GEAR REDUCTION MOTOR

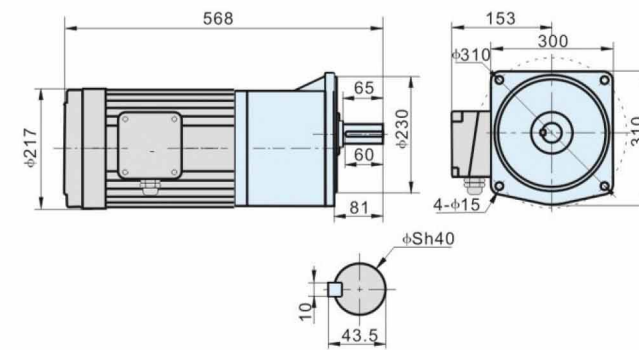
3.7kW

GV型立式三相 (刹车)
GV. Vertical Type
3 Phase (brake) Gear Motor

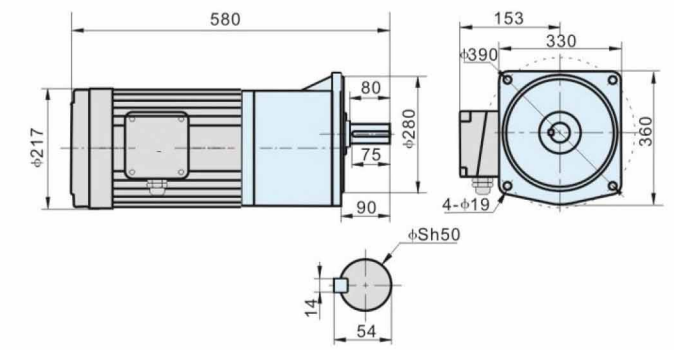


尺寸图 DIMENSIONS

GV40-(3~12.5)K+A18S3700S(B)
GV40-(15~60)K+A18S3700S(B) 轻负载缩框

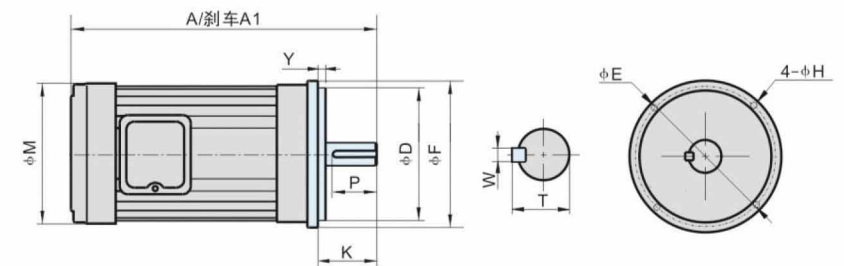


GV50-(15~70)K+A18S3700S(B)



尺寸图 DIMENSIONS

立式三相标准IEC铝壳 (刹车) 马达
vertical 3 phase standard IEC aluminum (brake) motor

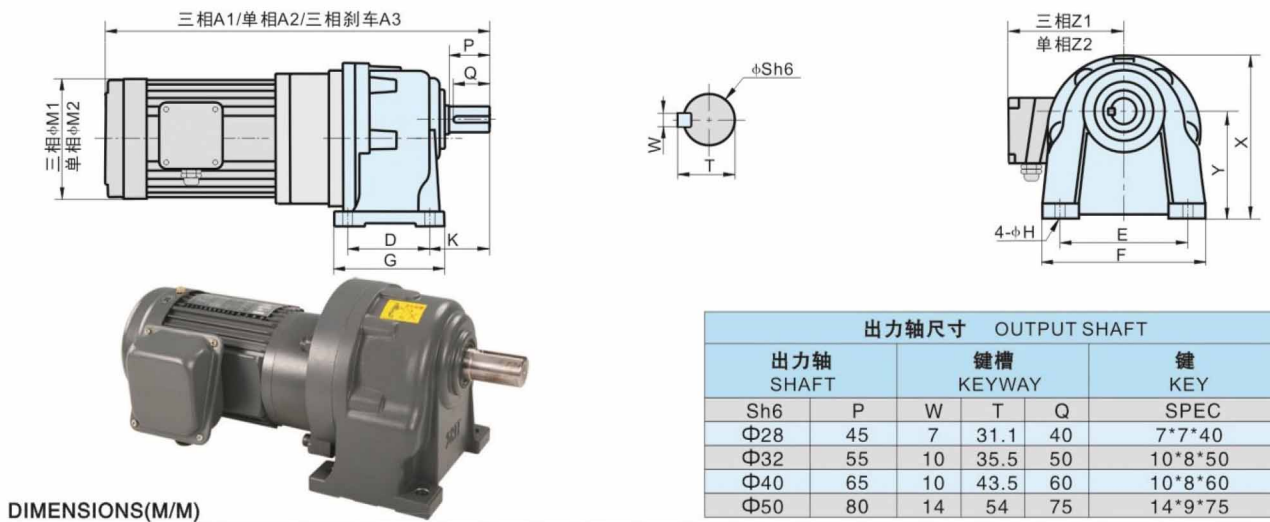


DIMENSIONS(M/M)

输出马力 CAPACITY	A	A1	D	E	F	H	K	M	P	S	T	W	Y
100W 1/8 HP	200	200	110	130	160	10	23	127	10	11	12.5	4	3
200W 1/2 HP	220	220	110	130	160	10	23	127	10	11	12.5	4	3
400W 1/2 HP	250	250	110	130	160	10	30	127	14	14	16	5	3
750W 1 HP	295	295	130	165	200	12	40	159	25	19	21.5	6	3
1500W 2 HP	350	370	130	165	200	12	50	190	32	24	27	8	3.5
2200W 3 HP	410	410	180	215	250	14.5	60	220	40	28	31	8	4
3700W 5 HP	450	450	180	215	250	14.5	60	220	40	28	31	8	4

● 尺寸图 DIMENSIONS

GH 卧式高速比附三相、单相铝壳(刹车)齿轮减速马达
GH horizontal high-speed opponent 3phase 1phase,aluminum shell(brake)gear reducer motors

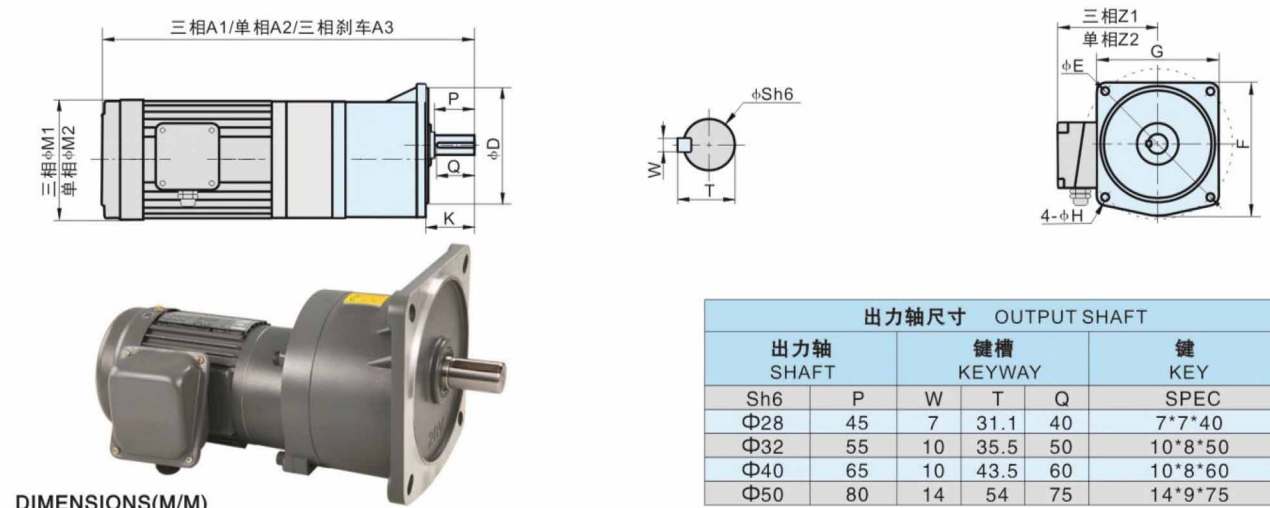


出力轴尺寸 OUTPUT SHAFT		键槽 KEYWAY		键 KEY	
出力轴 SHAFT		W	T	Q	SPEC
Sh6	P	W	T	Q	SPEC
Φ28	45	7	31.1	40	7*7*40
Φ32	55	10	35.5	50	10*8*50
Φ40	65	10	43.5	60	10*8*60
Φ50	80	14	54	75	14*9*75

DIMENSIONS(M/M)

马力 HP-4P	减速比 Gear Ratio	本体 CODE	型号 TYPE	A1	A2	A3	D	E	F	G	H	K	M1	M2	X	Y	Z1	Z2	重量 kg
100W 1/8HP	250-1800	1#+3#	28	490	410	394	90	140	180	122	11	68	127	127	180	116	116	116	13.2
200W 1/4HP	250-1800	2#+4#	32	471	491	475	130	170	215	160	13	73	127	127	210	140	116	116	29.6
400W 1/2HP	250-1800	3#+5#	40	532	551	536	150	210	260	185	15	85	127	159	248	160	116	133	49
750W 1HP	250-1800	3#+6#	50	602	635	602	170	265	330	220	19	104	159	190	315	200	133	145	59

GV 立式高速比附三相、单相铝壳(刹车)齿轮减速马达
GV all cinemas vertical high-speed opponent 3phase 1phase,aluminum shell(brake)gear reducer motors



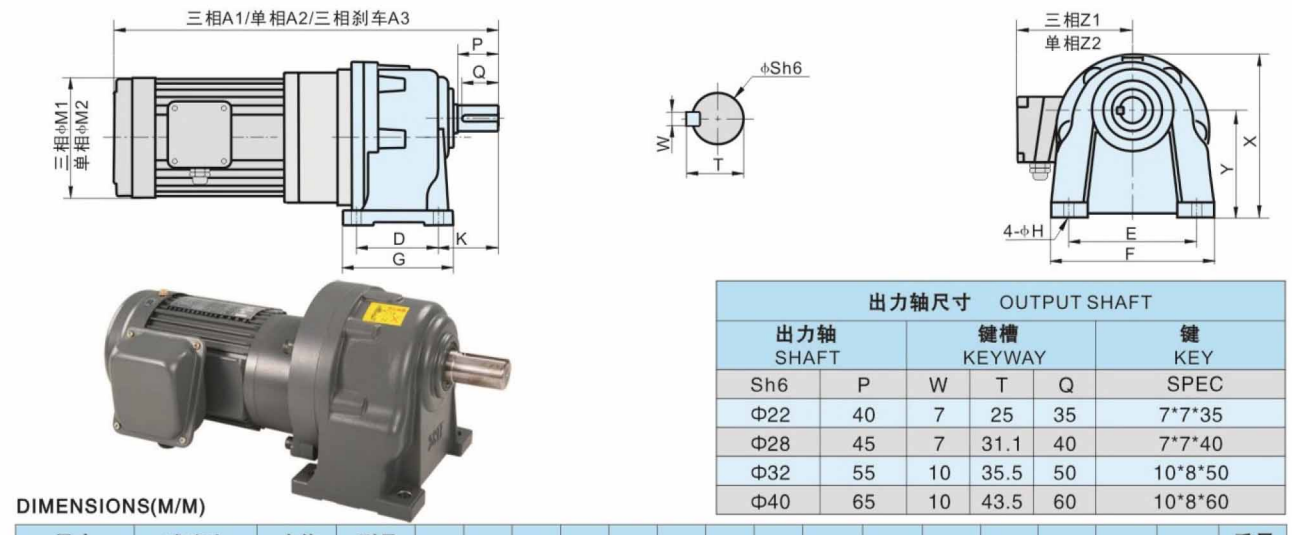
出力轴尺寸 OUTPUT SHAFT		键槽 KEYWAY		键 KEY	
出力轴 SHAFT		W	T	Q	SPEC
Sh6	P	W	T	Q	SPEC
Φ28	45	7	31.1	40	7*7*40
Φ32	55	10	35.5	50	10*8*50
Φ40	65	10	43.5	60	10*8*60
Φ50	80	14	54	75	14*9*75

DIMENSIONS(M/M)

马力 HP-4P	减速比 Gear Ratio	本体 CODE	型号 TYPE	A1	A2	A3	D	E	F	G	H	K	M1	M2	Z1	Z2	重量 kg
100W 1/8HP	250-1800	1#+3#	28	390	410	394	170	220	200	190	11	56	127	127	116	116	13.2
200W 1/4HP	250-1800	2#+4#	32	471	491	475	185	255	240	225	13	65.5	127	127	116	116	29.6
400W 1/2HP	250-1800	3#+5#	40	532	551	536	230	310	300	275	15	81	127	159	116	133	49
750W 1HP	250-1800	3#+6#	50	602	635	602	280	390	360	330	19	90	159	190	133	145	59

● 尺寸图 DIMENSIONS

GH 卧式高速比附三相、单相铝壳(刹车)缩框型齿轮减速马达
GH horizontal high-speed opponent 3phase 1phase,aluminum shell(brake)shrink box type gear reducer motors

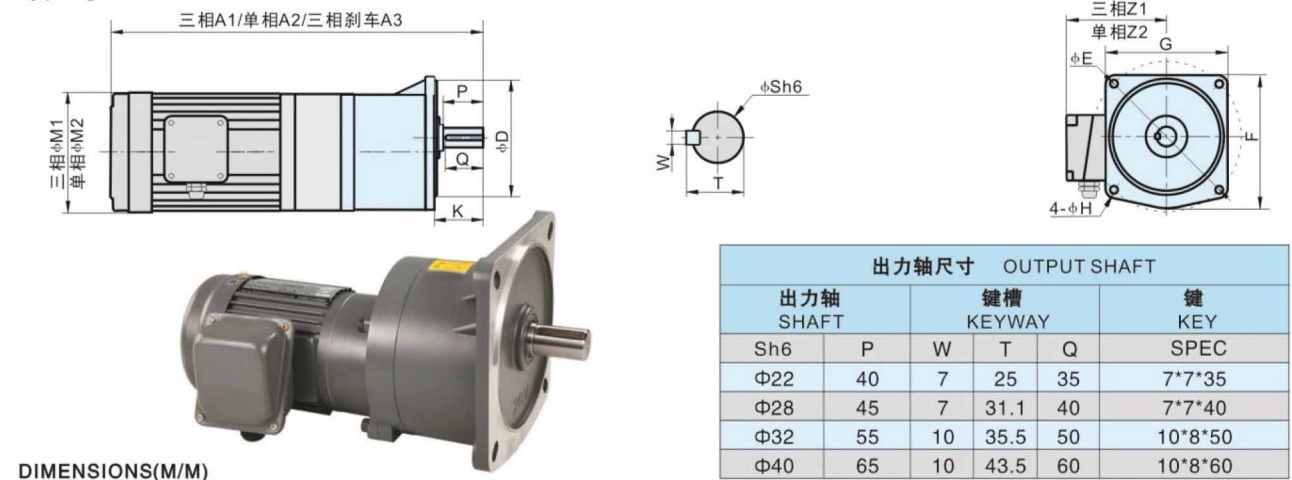


出力轴尺寸 OUTPUT SHAFT		键槽 KEYWAY		键 KEY	
出力轴 SHAFT		W	T	Q	SPEC
Sh6	P	W	T	Q <td>SPEC</td>	SPEC
Φ22	40	7	25	35	7*7*35
Φ28	45	7	31.1	40	7*7*40
Φ32	55	10	35.5	50	10*8*50
Φ40	65	10	43.5	60	10*8*60

DIMENSIONS(M/M)

马力 HP-4P	减速比 Gear Ratio	本体 CODE	型号 (TYPE)	A1	A2	A3	D	E	F	G	H	K	M1	M2	X	Y	Z1	Z2	重量 kg
100W 1/8HP	250-1800	1#+2#	22	365	385	369	60	130	163	90	11	56.5	127	127	152	97.5	116	116	13.2
200W 1/4HP	250-1800	1#+3#	28	410	430	414	90	140	180	122	11	68	127	127	180	116	116	116	29.6
400W 1/2HP	250-1800	2#+4#	32	491	510	495	130	170	215	160	13	73	127	159	210	140	116	133	49
750W 1HP	250-1800	3#+5#	40	561	594	561	150	210	260	185	15	85	159	190	248	160	133	145	59

GV 立式高速比附三相、单相铝壳(刹车)缩框型齿轮减速马达
GV all cinemas vertical high-speed opponent 3phase 1phase,aluminum shell(brake)shrink box type gear reducer motors



出力轴尺寸 OUTPUT SHAFT		键槽 KEYWAY		键 KEY	
出力轴 SHAFT		W	T	Q	SPEC
Sh6	P	W	T	Q	SPEC
Φ22	40	7	25	35	7*7*35
Φ28	45	7	31.1	40	7*7*40
Φ32	55	10	35.5	50	10*8*50
Φ40	65	10	43.5	60	10*8*60

DIMENSIONS(M/M)

马力 HP-4P	减速比 Gear Ratio	本体 CODE	型号 (TYPE)	A1	A2	A3	D	E	F	G	H	K	M1	M2	Z1	Z2	重量 kg
100W 1/8HP	250-1800	1#+2#	22	364	384	368	148	185	170	156	11	50	127	127	116	116	13.2
200W 1/4HP	250-1800	1#+3#	28	410	430	414	170	220	200	190	11	56	127	127	116	116	29.6
400W 1/2HP	250-1800	2#+4#	32	491	510	495	185	255	240	225	13	65.5	127	159	116	133	49
750W 1HP	250-1800	3#+5#	40	561	594	561	230	310	300	275	15	81	159	190	133	145	59